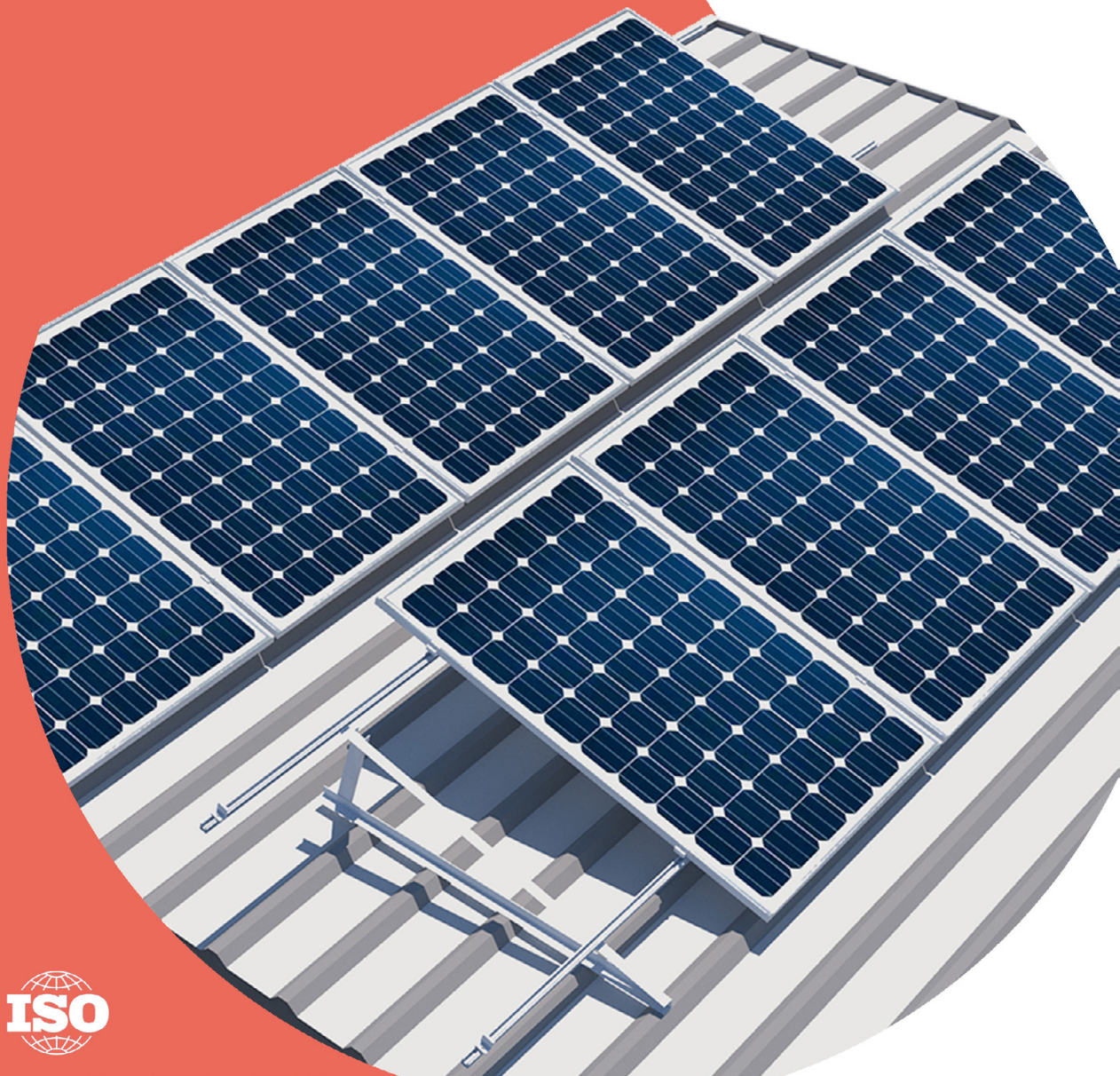


# SUNMOUNT

## SOLAR MOUNTING SOLUTIONS



# Reports and Certifications



**TUV Certified**

## **Component Analysis:**

1. FEA analysis of all Structural Members.
2. FEA analysis of all Rails & Brackets.
3. FEA analysis of all Fasteners & Accessories.

## **Wind Analysis Report:**

1. End and Mid Clamp Assembly – With different variations
2. Power Clamp Assembly – With different variations



## ABOUT SUNMOUNT®

SunMount® is an indigenous Solar PV Modules Mounting company, specializing in the design, manufacture and supply of a diverse range of high quality and innovative rooftop solar mounting structural systems.

SunMount® provides end-to-end solutions for mounting solar PV modules on the rooftop. We provide solutions for various types of metal and asbestos roofs. We are committed to ensuring the highest quality of raw materials for all our products, top quality of finished product and on-time dispatch, backed with genuine warranty, swift and apt after-sales support.

Our mission is to promote renewable energy solutions by making solar installations easier and accessible to all and thereby eliminating the need for conventional energy resources like fossil fuels.

## THE TEAM

SunMount® is an industrious & studious team of prolific & vastly experienced professionals; Engineers, Chartered Engineers, Architects and Post Graduates in Commerce & Marketing. We have a combined team experience of more than 75 years, in diversified sectors of Manufacturing, Services and Consultancy.

SunMount® aspires and aims to bridge the gap between the clients' dynamic needs and innovative solutions – with genuine & reliable scientific analysis and certifications from reputed organisations, along with being competitive in prices.

***‘Quality with Stability till Infinity’***

## SUNMOUNT® OFFERS



Most Optimum &  
Cost Effective  
Solutions



Best in Market  
Warranty



Quick Dispatch and  
Neat Installations



Design Wind Speed  
up to 200 kmph\*



High Strength Products  
with Long Life and Easy  
Maintenance



Prompt and Apt  
After-Sales Support

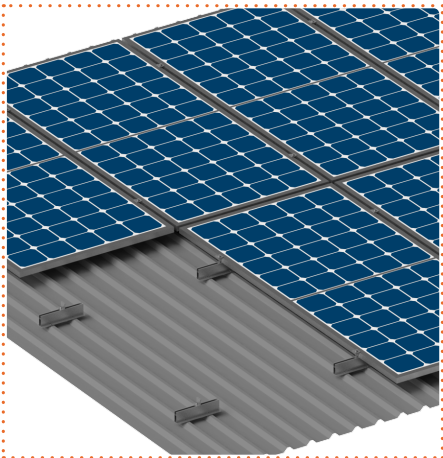
# OUR PRODUCTS

SunMount® provides the following fixation systems for mounting solar PV modules on industrial metal and asbestos roof.

Solutions and Products are available in both penetrating/non-penetrating options.

## 1. Mono Rail System

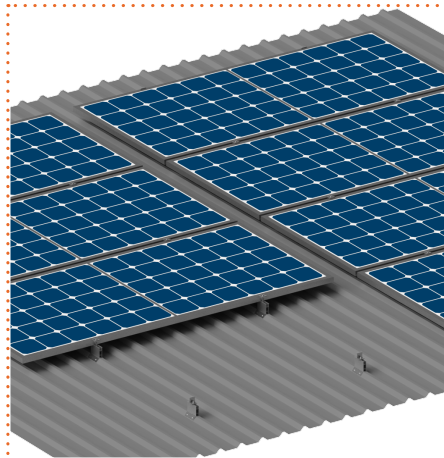
Portrait Orientation



p.08

## 2. Mini Rail System

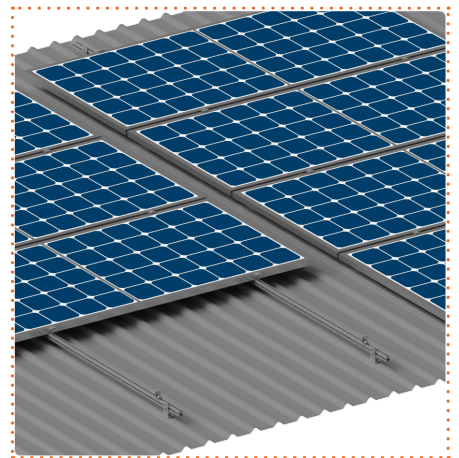
Landscape Orientation



p.10

## 3. Long Rail System

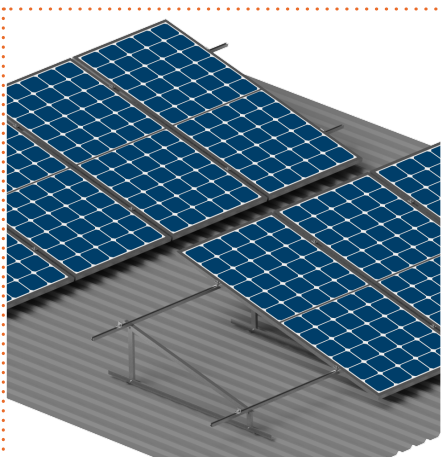
Landscape Orientation



p.12

## 4. Inclined System

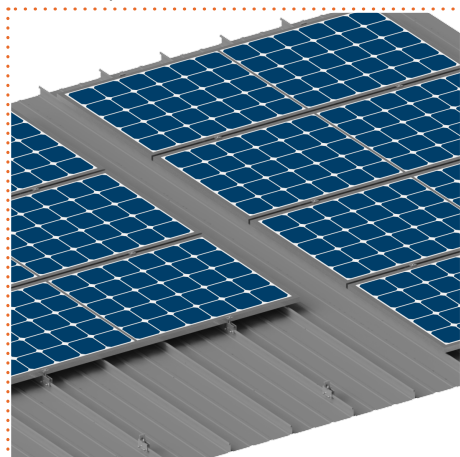
Portrait Orientation



p.14

## 5. Standing Seam System

Landscape Orientation



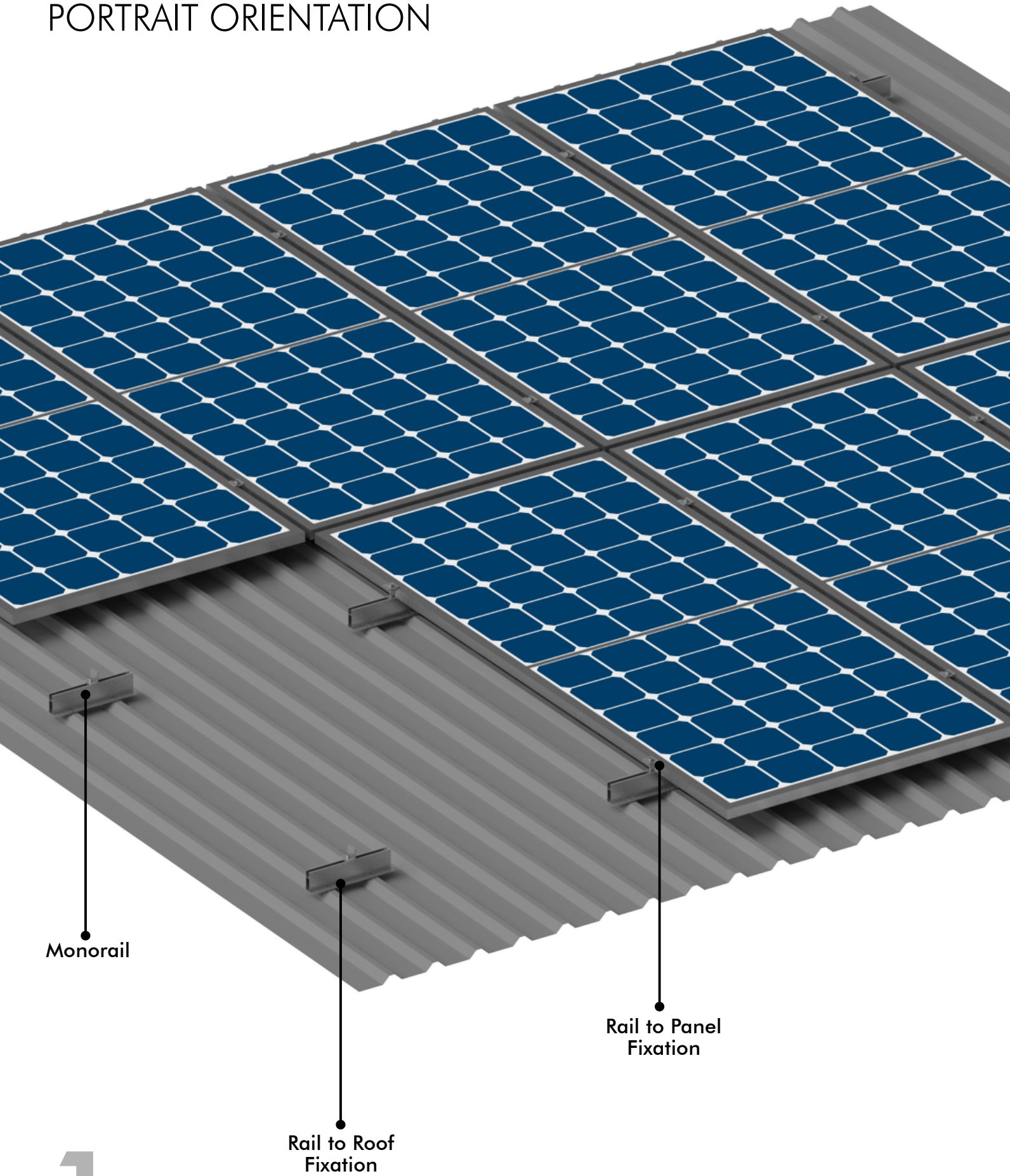
p.16

SunMount® manufactures all the fixing and fastening accessories in-house or source from genuine & reliable vendors after strict quality checks and incisive scrutiny.



# MONO RAIL SYSTEM:

PORTRAIT ORIENTATION



1.

## SYSTEM HIGHLIGHTS

Mono Rail System is a lightweight and most optimum system for mounting solar PV panels on trapezoidal metal roof.

Its easy installation allows to install high capacity of solar panels in reasonably short amount of time.

The system is suitable for a large scale of applications.

### Properties

- Lightweight & Optimised system
- Easy Installation & Maintenance
- PV Modules are installed in **Portrait** orientation.
- Suitable for any trapezoidal sheet crest width.
- Compatible with all PV module.
- Cost Effective Solution
- Roof clearance of 100mm.
- Design Wind Speed - Upto 200 kmph\*
- Available in Anodized/Non-Anodized finish.



#### Mono Rail Dimensions:

Height: 60 mm | 70 mm | 100 mm

Length: Customised as per Crest to Crest Distance

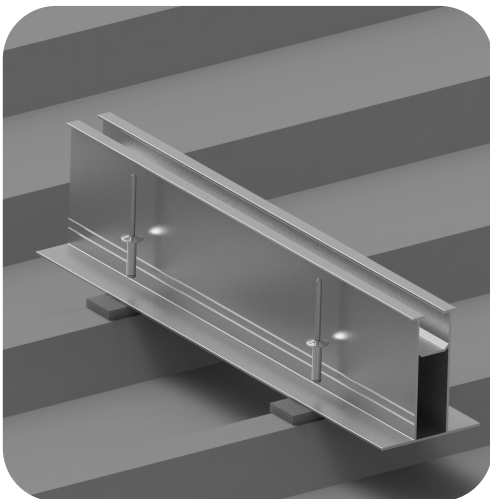
#### Raw Material Used:

Aluminium 6063 T6 | SS 304 | EPDM

## MONO RAIL FIXATIONS

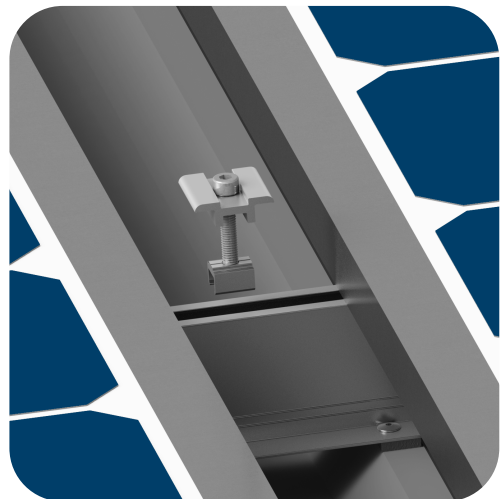
### Rail to Roof

Rail to Roof fixation is provided by Rivet and EPDM tape. Suitable with any trapezoidal sheet crest width. Non-penetrative fixation can also be provided using structural adhesive.



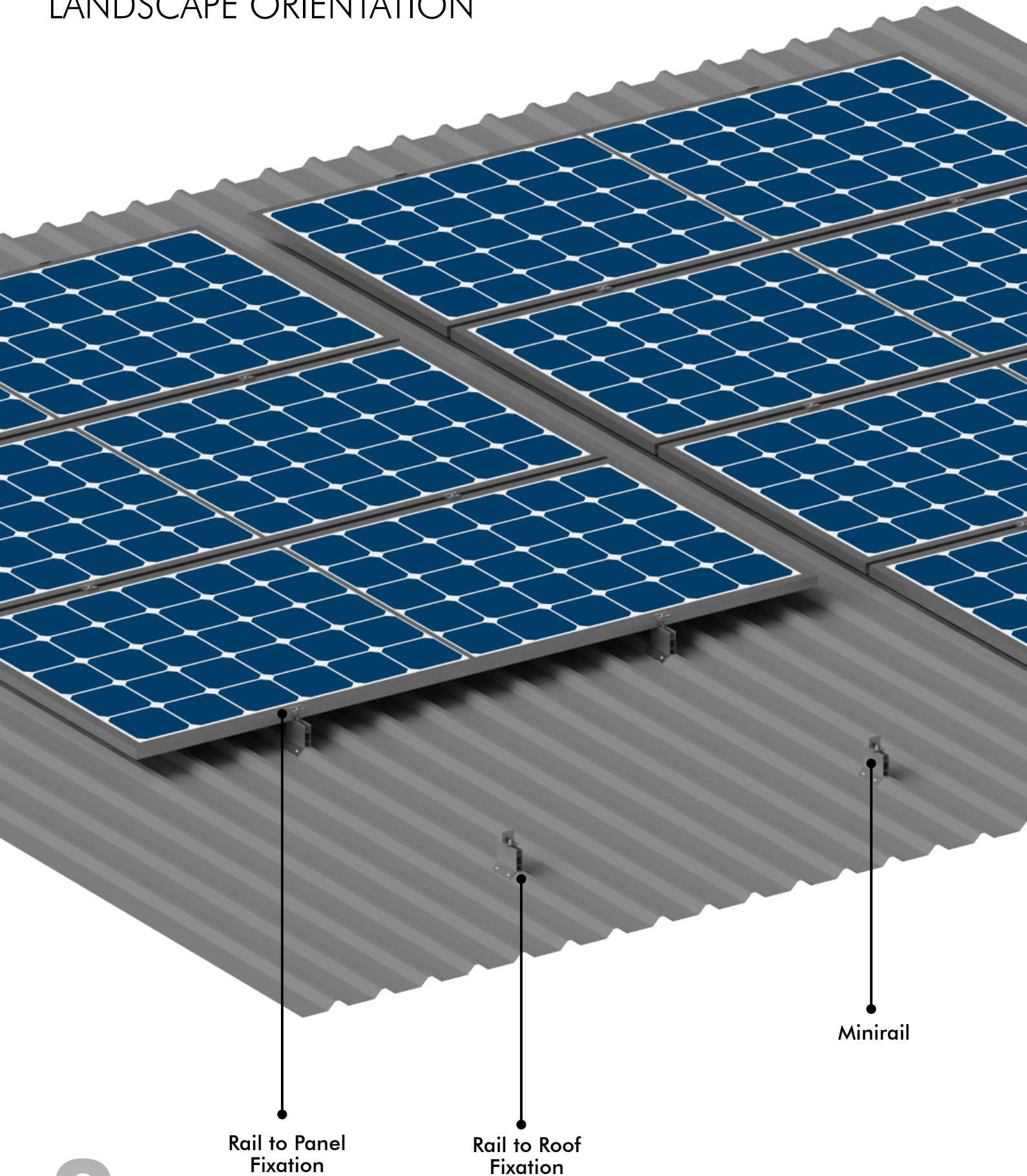
### Rail to Panel

Rail to Panel fixation is provided by U-clamp or Mid-clamp. Suitable for 30mm, 35mm and 40mm thickness of solar panel.



# MINI RAIL SYSTEM:

## LANDSCAPE ORIENTATION



2.



## SYSTEM HIGHLIGHTS

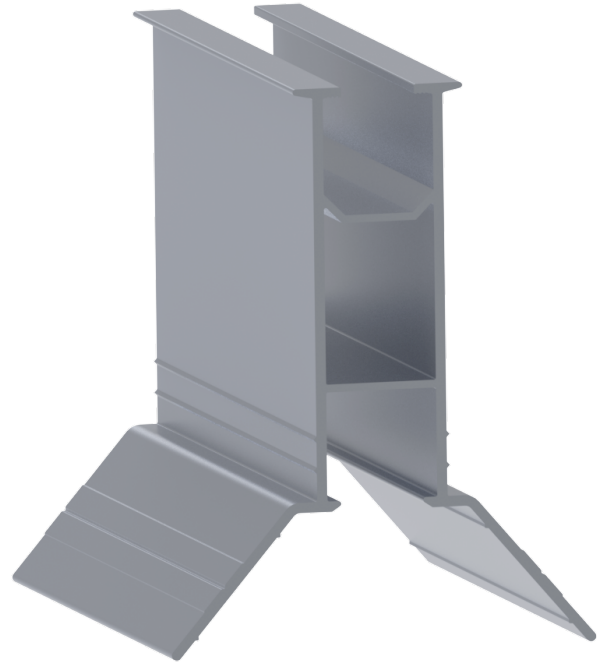
Mini Rail System is a lightweight and most optimum system for mounting solar PV panels on trapezoidal metal roof.

Its easy installation allows to install high capacity of solar panels in reasonably short amount of time.

The system is suitable for a large scale of applications.

### Properties

- Lightweight & Optimised system
- Easy Installation & Maintenance
- PV Modules installed in **Landscape** orientation.
- Compatible with all PV module.
- Roof clearance of 100mm.
- Cost Effective Solution
- Design Wind Speed - Upto 200 kmph\*
- Available in Anodized/Non-Anodized finish.



#### Mini Rail Dimensions:

Height: 70 mm | 100 mm  
Length: Customizable

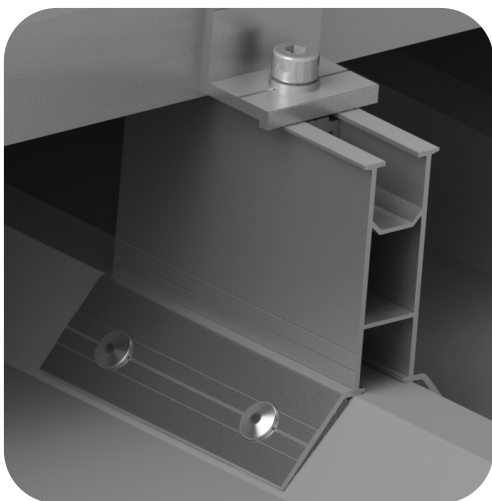
#### Raw Material Used:

Aluminium 6063 T6 | SS 304 | EPDM

## MINI RAIL FIXATIONS

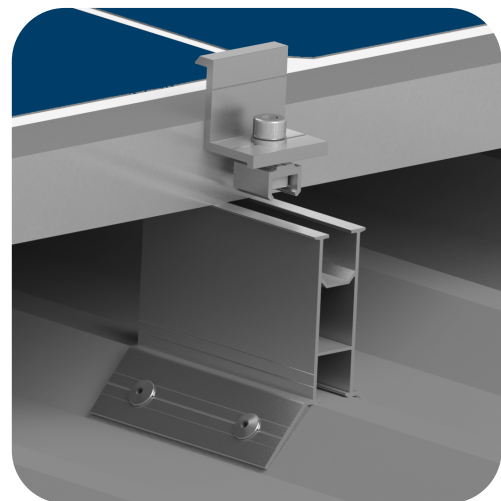
### Rail to Roof

Rail to Roof fixation is provided by Rivet and EPDM tape. Non-penetrative fixation can also be provided using structural adhesive.



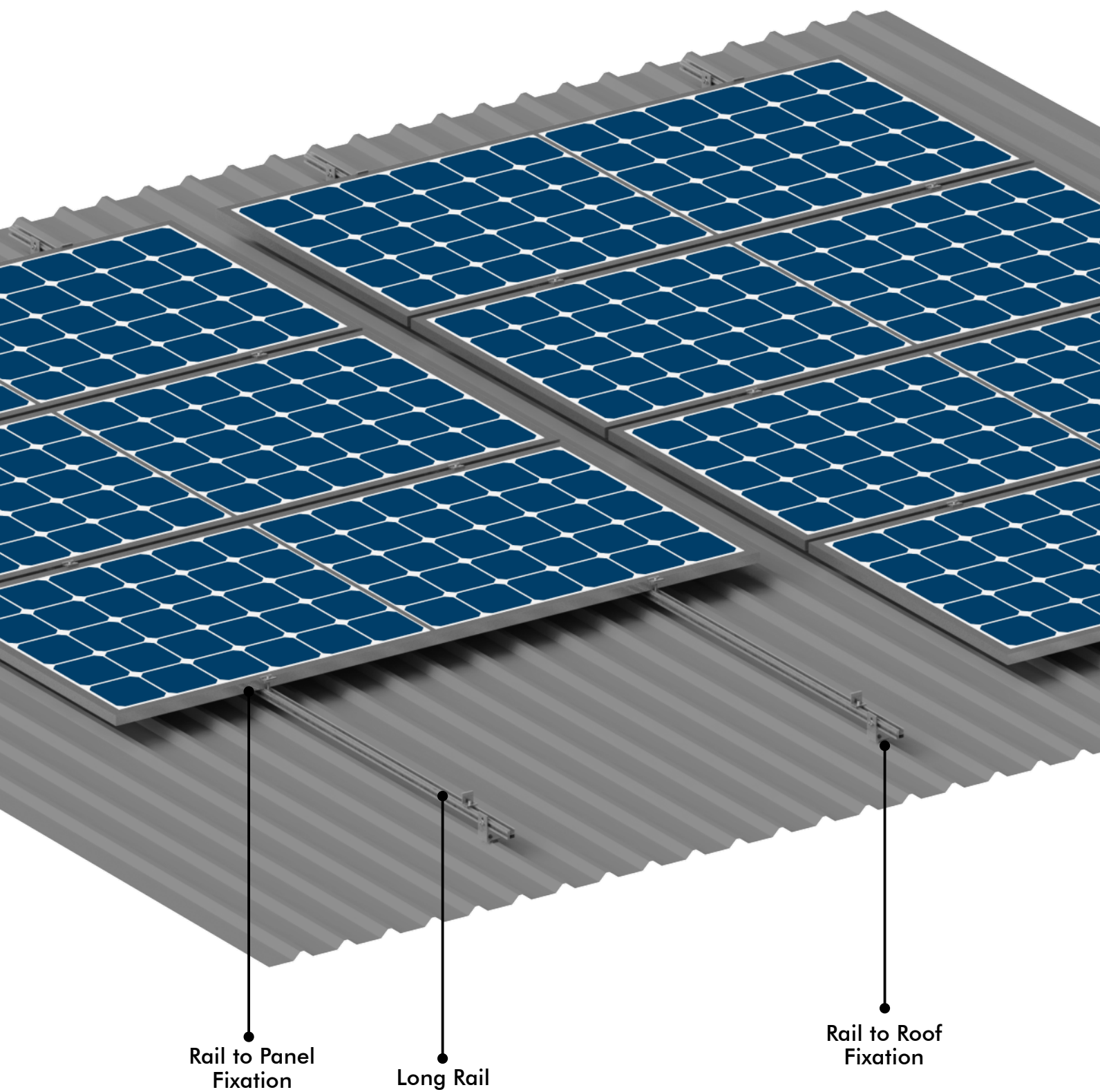
### Rail to Panel

Rail to Panel fixation is provided by Z-clamp or End-clamp. Suitable for 30mm, 35mm and 40mm thickness of solar panel.



# LONG RAIL SYSTEM:

## LANDSCAPE ORIENTATION



3.

## SYSTEM HIGHLIGHTS

Long Rail System is a high-strength system for mounting solar PV panels on trapezoidal metal or asbestos roofs.

Its easy installation allows to install high capacity of solar panels in reasonably short amount of time.

The system requires lesser number of punctures in the roof as compared to Mini rail and Mono rail systems.

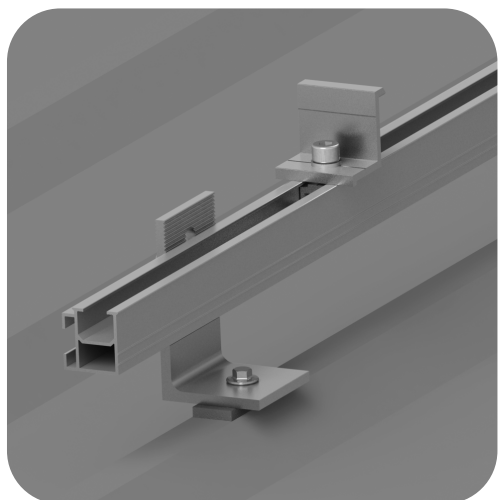
### Properties

- Easy Installation & Maintenance
- PV Modules installed in **Landscape** orientation.
- Purlin mounted robust system for high wind loads.
- Universal rails suitable for any roof crest.
- Utilizes the existing holes of self-drilling screws on the roof.
- Suitable for asbestos sheet roof by fixing on existing J-bolts.
- Available in Anodized/Non-Anodized finish.
- Design Wind Speed - Upto 200 kmph\*
- **Raw Material Used:** Aluminium 6063 T6 | SS 304 | EPDM

## LONG RAIL FIXATIONS

### Rail to Roof

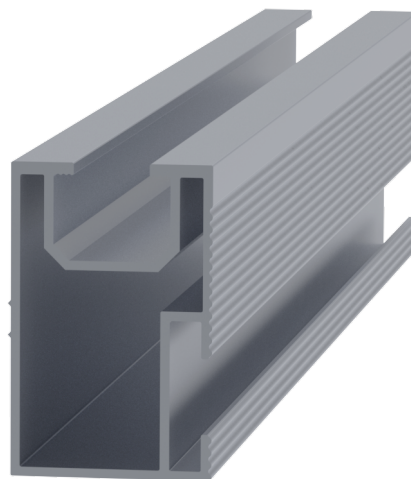
Rail to Roof fixation is provided by L-clamp which is fixed to the crest/purlin with self-drilling screw.



### Long Rail - PRO:

Size: 32x50 mm

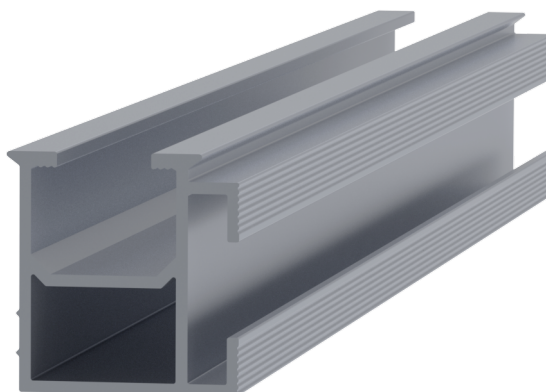
Length: Customized as per requirement



### Long Rail

Size: 30x28 mm

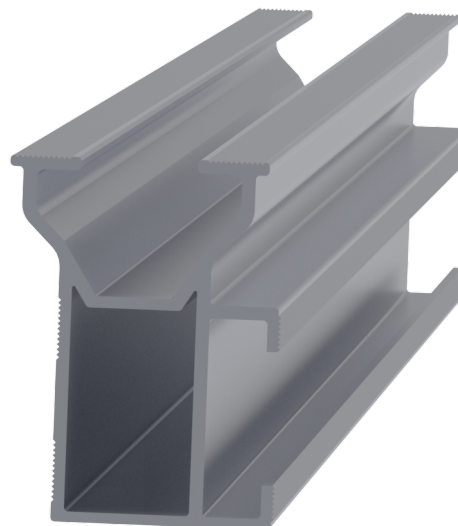
Length: Customized as per requirement



### Long Rail - ULTRA:

Size: 32x40 mm

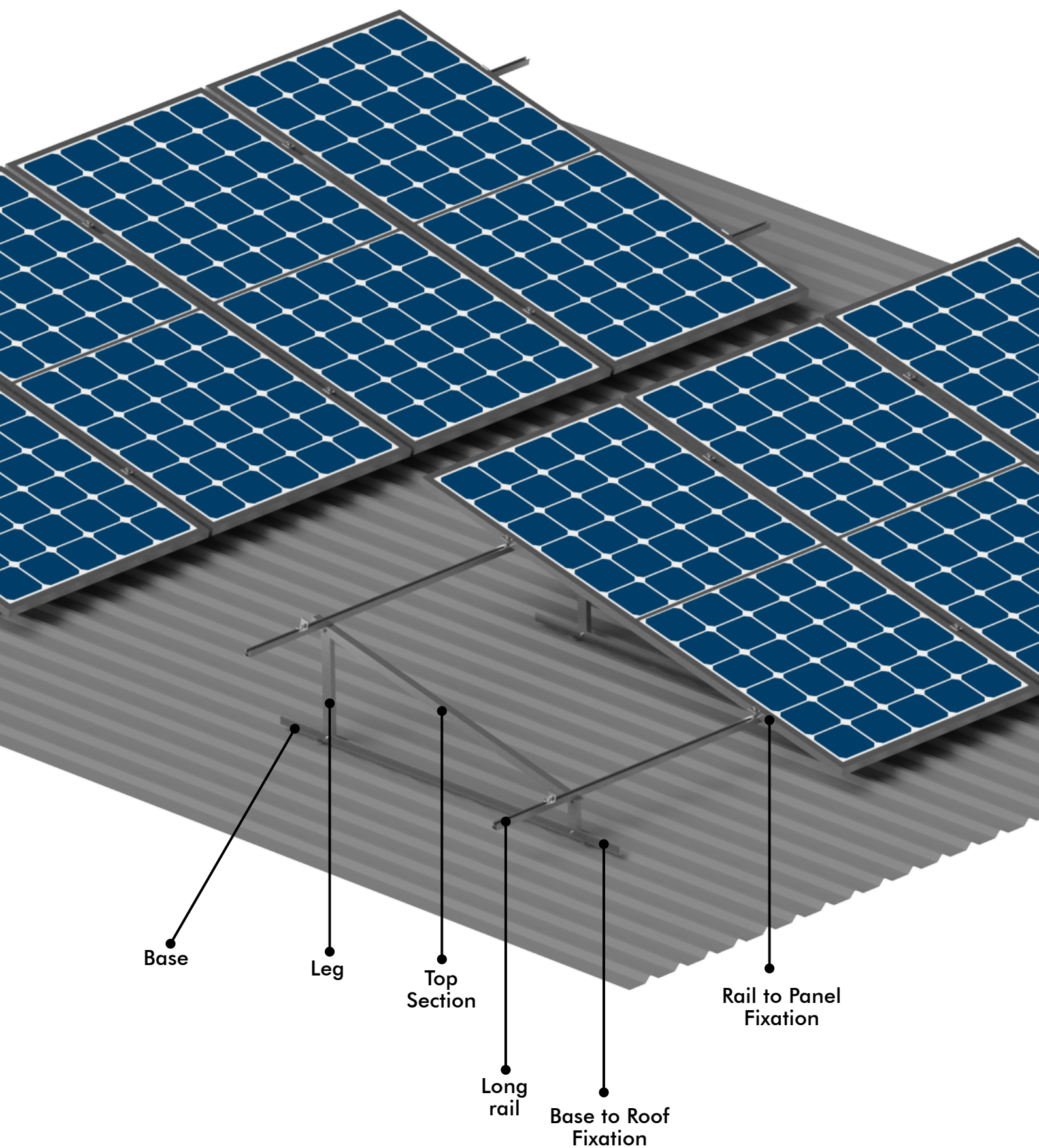
Length: Customized as per requirement





# INCLINED SYSTEM

PORTRAIT ORIENTATION



4.

## SYSTEM HIGHLIGHTS

An Inclined system is used for mounting solar panels on trapezoidal **metal or asbestos** roofs with specially inclined solar mounting structures which can result in the higher generation of electricity from the PV system.

This system allows installing modules in a south-facing direction on roofs that are tilted towards North, East and West.

The Inclination angle can vary as per requirement from 5° to 20° tilt.

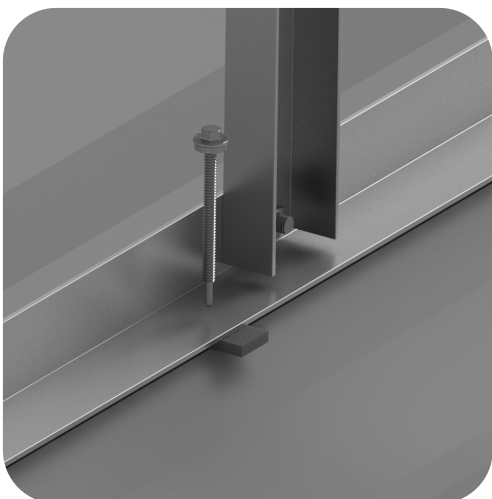
### Properties

- Easy Installation & Maintenance
- PV Modules are installed in **Portrait** orientation.
- Increased height for thermal stability of system.
- Utilizes the existing holes of self-drilling screws on the roof and on purlins.
- Universal rail suitable for any roof crest.
- Compatible with all PV module.
- High roof clearance
- Available in Anodized/Non-Anodized finish.
- Design Wind Speed - Upto 170 kmph\*

## CHANNEL FIXATIONS

### Channel to Roof

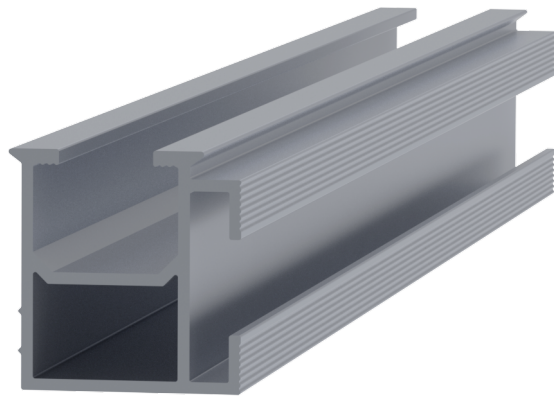
L-channel is fixed to the crest/purlin with self-drilling screw.



### Long Rail – LITE:

Size: 30x28 mm

Length: Customized as per requirement



### L-Channel:

Size: 38x38 mm

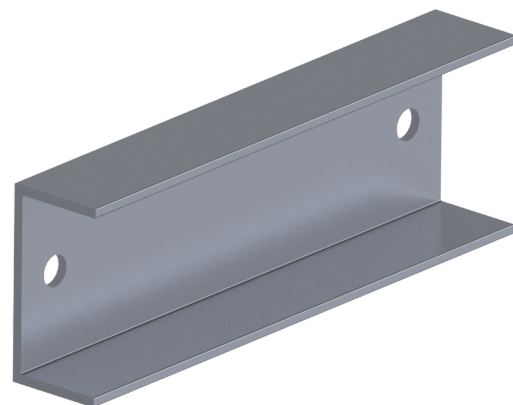
Length: Customized as per requirement



### C-Channel:

Size: 25x50 mm

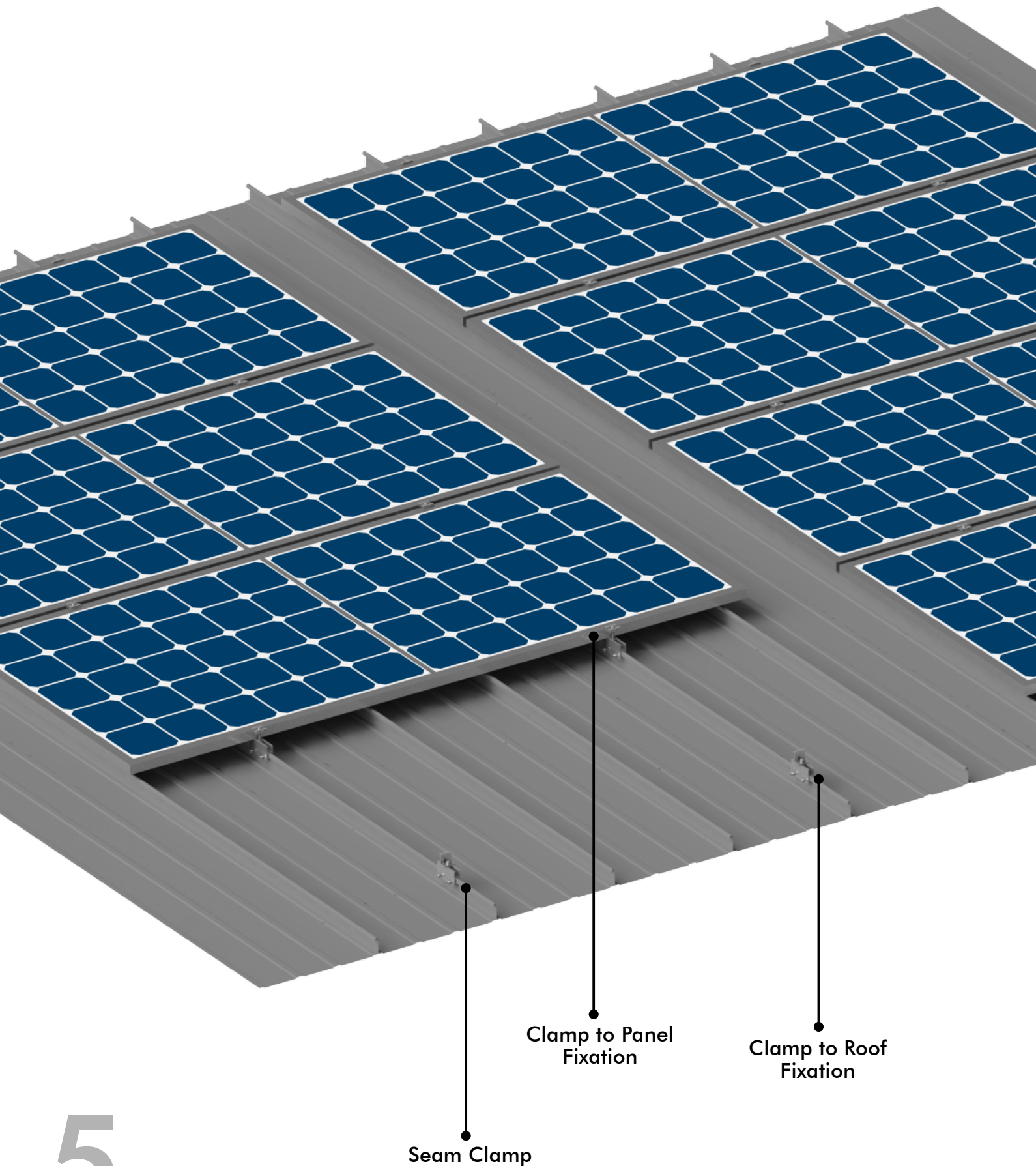
Length: Customized as per requirement



**Raw Material Used:** Aluminium 6063 T6 | SS 304 | EPDM

# STANDING SEAM SYSTEM

LANDSCAPE ORIENTATION



5.

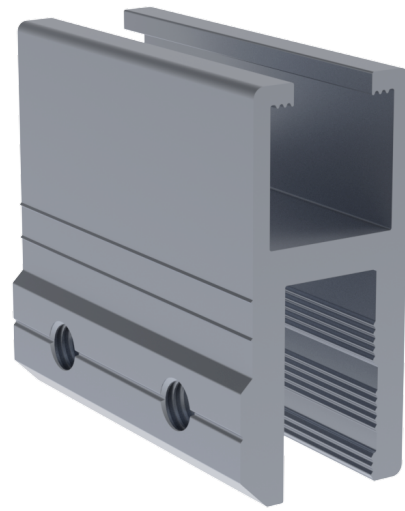


## SYSTEM HIGHLIGHTS

Standing Seam System is a lightweight and optimum system for mounting solar PV panels on standing seam roof.

Its easy installation allows to install high capacity of solar panels in reasonably short amount of time.

The system is suitable for a large scale of applications.



### Properties

- Lightweight & Optimised system
- Easy Installation & Maintenance
- PV Modules installed in **Landscape** orientation.
- Suitable for standing seam roof profile.
- Compatible with all PV module.
- Cost Effective Solution
- Design Wind Speed - Upto 200 kmph\*
- Available in Anodized/Non-Anodized finish.

#### Seam Clamp Dimensions:

Height: 55 mm | 110 mm

Length: 60 mm | 100mm | Customizable

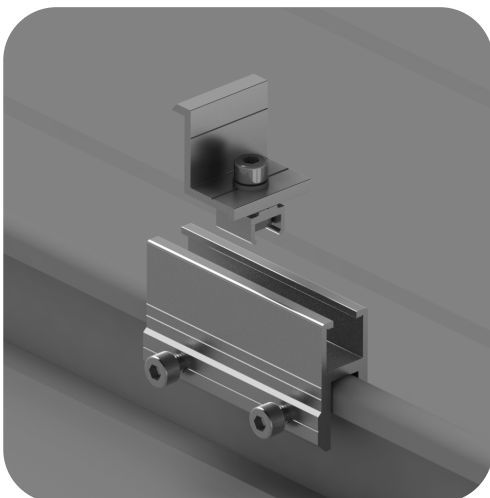
#### Raw Material Used:

Aluminium 6063 T6 | SS 304 | EPDM

## SEAM CLAMP FIXATIONS

### Seam Clamp to Roof

Seam Clamp is fixed to the standing seam profile of the roof with grub screws.



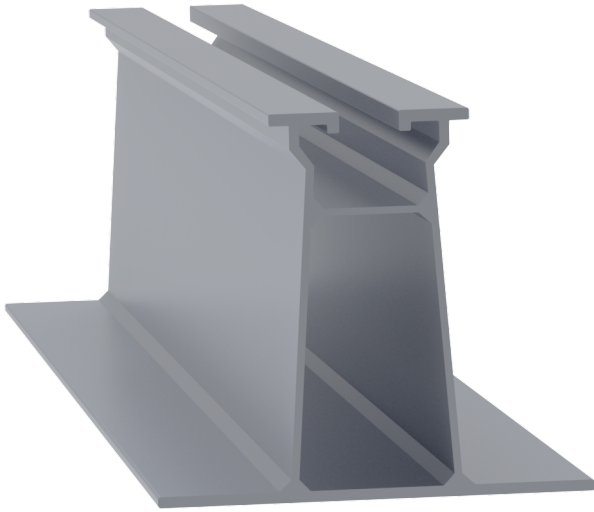
### Seam Clamp to Panel

Seam Clamp to Panel fixation is provided by U-clamp or Mid-clamp. Suitable for 30mm, 35mm and 40mm thickness of solar panel.



# AL BRACKETS

## 1. MONO RAIL BRACKET | 65MM



**Height:** 65mm

**Length:** 300mm | Customised as per Crest Distance

**Raw Material Used:** Aluminium 6063 T6

**Certifications:** TUV Certified for Tensile Strength and Chemical Composition.

## 2. MONO RAIL BRACKET | 70MM



**Height:** 70mm

**Length:** 300mm | Customised as per Crest Distance

**Raw Material Used:** Aluminium 6063 T6

**Certifications:** TUV Certified for Tensile Strength and Chemical Composition.

## 3. MONO RAIL BRACKET | 100MM



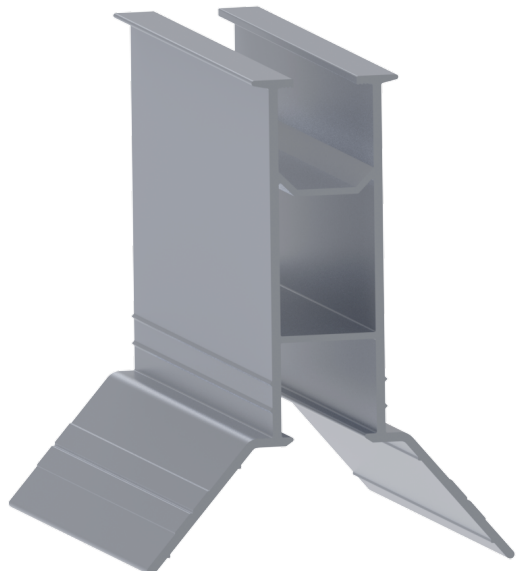
**Height:** 100mm

**Length:** 300mm | Customised as per Crest Distance

**Raw Material Used:** Aluminium 6063 T6

**Certifications:** TUV Certified for Tensile Strength and Chemical Composition.

## 4. MINI RAIL BRACKET



**Height:** 70mm | 100 mm

**Length:** Customizable

**Raw Material Used:** Aluminium 6063 T6

**Certifications:** TUV Certified for Tensile Strength and Chemical Composition.

## 5. SEAM CLAMP BRACKET | 55MM



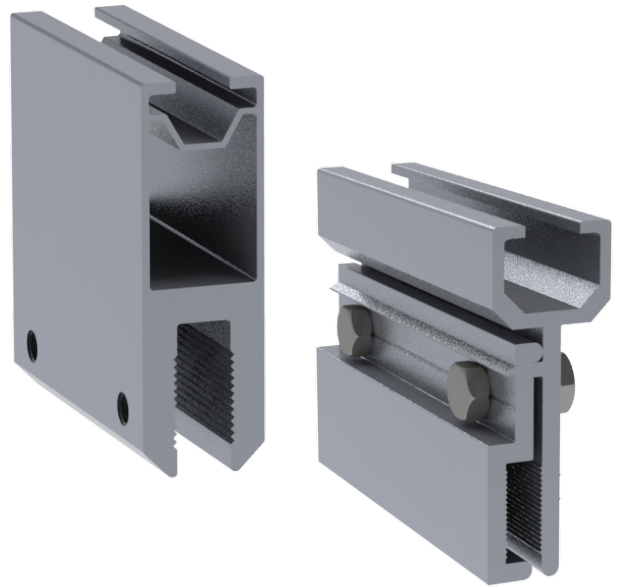
**Height:** 55mm

**Length:** 35, 60, 100mm | Customisable

**Raw Material Used:** Aluminium 6063 T6

**Certifications:** TUV Certified for Tensile Strength and Chemical Composition.

## 6. SEAM CLAMP BRACKET | 100MM



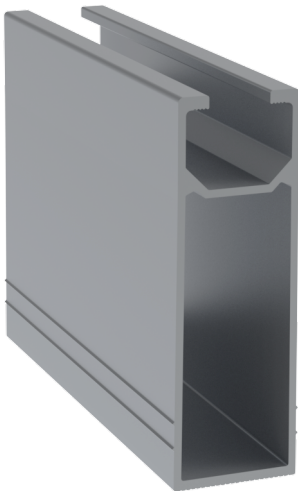
**Height:** 100mm

**Length:** 100mm | Customisable

**Raw Material Used:** Aluminium 6063 T6

**Certifications:** TUV Certified for Tensile Strength and Chemical Composition.

## 7. SHORT RAIL ADHESIVE BRACKET | 75MM



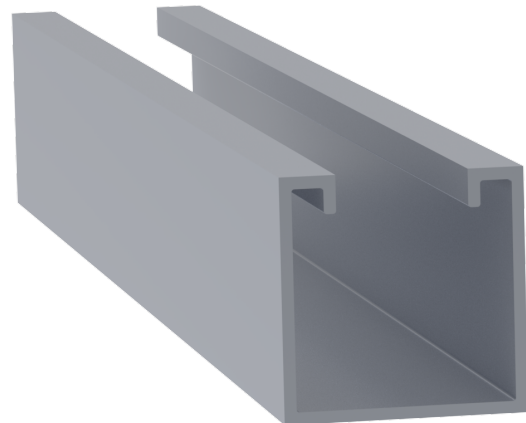
**Height:** 75mm

**Length:** 100mm | 150mm | Customisable

**Raw Material Used:** Aluminium 6063 T6

**Certifications:** TUV Certified for Tensile Strength and Chemical Composition.

## 8. STRUT CHANNEL BRACKET | 40MM



**Height:** 40mm

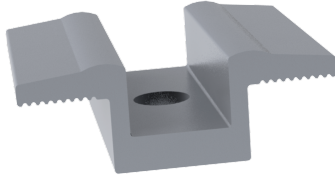
**Length:** 100mm | Customisable

**Raw Material Used:** Aluminium 6063 T6

**Certifications:** TUV Certified for Tensile Strength and Chemical Composition.

# ACCESSORIES

## 1. U CLAMP

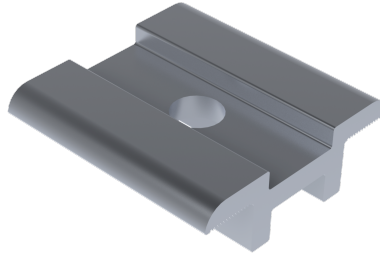


### Raw Material Used

Aluminium 6063 T6  
Size: Universal

- Quick and Easy Installation
- High Strength
- Compatible with all PV Module
- Long Life & Easy Maintenance
- Cost Effective

## 2. MID CLAMP



### Raw Material Used

Aluminium 6063 T6  
Size: Universal

- Quick and Easy Installation
- High Strength
- Compatible with all PV Module
- Long Life & Easy Maintenance
- Cost Effective

## 3. L/RAIL STAND

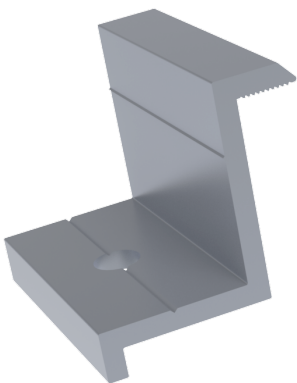


### Raw Material Used

Aluminium 6063 T6  
Size: 40mm

- Quick and Easy Installation
- High Strength
- Compatible with all PV Module
- Long Life & Easy Maintenance
- Cost Effective

## 4. END CLAMP

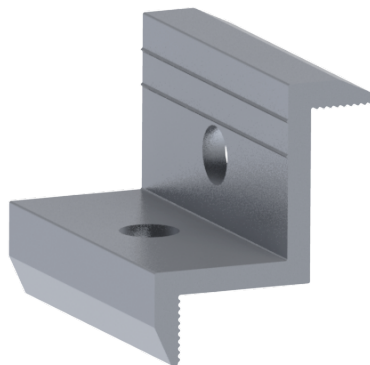


### Raw Material Used

Aluminium 6063 T6  
Size: 30mm, 35mm, 40mm.

- Quick and Easy Installation
- High Strength
- Compatible with 30mm, 35mm, 40mm PV Modules
- Long Life & Easy Maintenance

## 5. END CLAMP 30-35mm

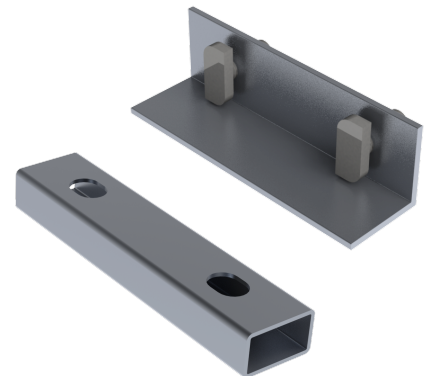


### Raw Material Used

Aluminium 6063 T6  
Size: 30mm, 35mm

- Quick and Easy Installation
- High Strength
- Long Life & Easy Maintenance
- Compatible with all types of Rail.

## 6. RAIL JOINER



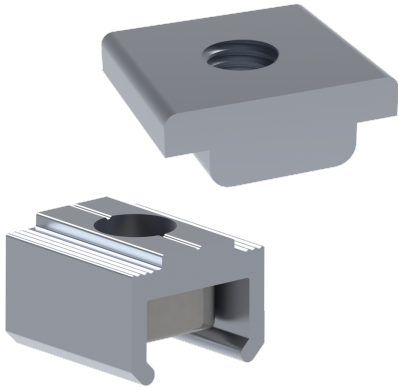
### Raw Material Used

Aluminium 6063 T6  
Size: 100

- Quick and Easy Installation
- High Strength
- Compatible with all Rail types.
- Long Life & Easy Maintenance
- Cost Effective



## 7. RAILING NUT

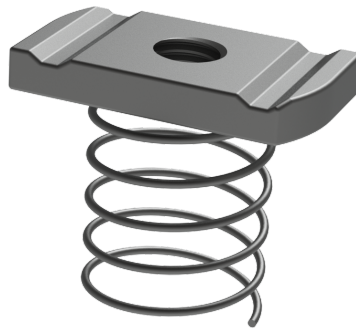


### Raw Material Used

Aluminium 6063 T6  
Size: M8

- Quick and Easy Installation
- High Strength
- Long Life & Easy Maintenance
- Compatible with all types of Rail.

## 8. SPRING NUT



### Raw Material Used

Galvanised Iron  
Size: M8

- Quick and Easy Installation
- High Strength
- Cost Effective
- Long Life
- Well recognised

## 9. ALLEN BOLT

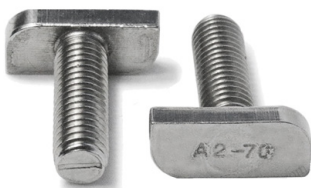


### Raw Material Used

SS 304  
Size: M8x20, 30,40, 45, 50.

- Quick and Easy Installation
- High Strength
- Long Life
- Easy Maintenance

## 10. T BOLT



### Raw Material Used

SS 304  
Size: M8x20

- Quick and Easy Installation
- High Strength
- Long Life
- Easy Maintenance

## 11. FLANGE NUT



### Raw Material Used

SS 304  
Size: M8

- Quick and Easy Installation
- High Strength
- Long Life
- Easy Maintenance
- Easy Removal

## 12. HEX BOLT



### Raw Material Used

SS 304  
Size: M8x16, 25, 35.

- Quick and Easy Installation
- High Strength
- Long Life
- Easy Maintenance

### 13. SPRING WASHER



#### Raw Material Used

SS 304

Size: M8

- Quick and Easy Installation
- Provides strength to the bolted joints.
- Prevents loosening of nuts.
- Long Life & Easy Maintenance

### 14. PLAIN WASHER



#### Raw Material Used

SS 304

Size: M8

- Quick and Easy Installation
- Provides strength to the bolted joints.
- Prevents loosening of nuts.
- Long Life & Easy Maintenance

### 15. HEX NUT



#### Raw Material Used

SS 304

Size: M8

- Quick and Easy Installation
- High Strength
- Long Life
- Easy Maintenance
- Easy Removal

### 16. GRUB SCREW



#### Raw Material Used

SS 304

Size: M8x20

- Quick and Easy Installation
- High Strength
- Long Life
- Easy Maintenance

### 17. BLIND RIVET



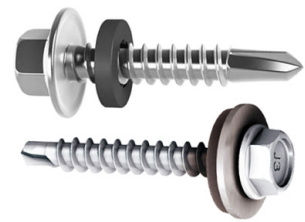
#### Raw Material Used

Aluminium

Size: 4.8x19, 4.8x25.

- Quick and Easy Installation
- High Strength
- Cost Effective
- Long Life
- Well recognised

### 18. SELF DRILLING SCREW



#### Raw Material Used

Xylan Coated

Size: 6.3x75, 5.5x75.

- Quick and Easy Installation
- High Strength
- Cost Effective
- One Tool Approach
- Long Life & Easy Maintenance

## 19. EPDM RUBBER

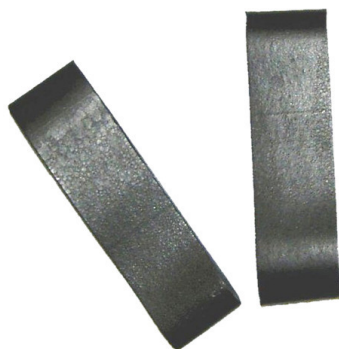


### Raw Material Used

100% Genuine EPDM Rubber  
Size: 35x40x2.

- 150DN/ASTM Methods Tested
- High Strength & Long life
- Moisture and Heat Resistant
- Versatile & Cost Effective
- Good electrical resistivity

## 20. EPDM TAPE

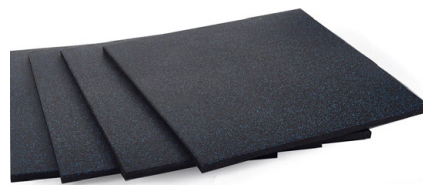


### Raw Material Used

100% Genuine EPDM Rubber  
Size: 100x20x3, 60x20x5.

- 150DN/ASTM Methods Tested
- High Strength & Long life
- Moisture and Heat Resistant
- Versatile & Cost Effective
- Good electrical resistivity

## 21. EPDM MAT

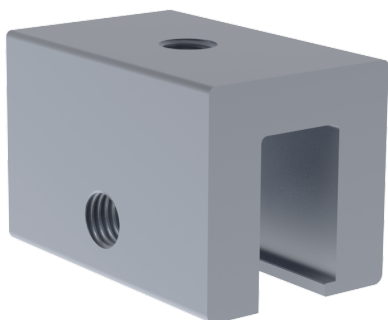


### Raw Material Used

100% Genuine EPDM Rubber  
Size: 1200x1200x30.

- 150DN/ASTM Methods Tested
- High Strength & Long life
- Moisture and Heat Resistant
- Versatile & Cost Effective
- Good electrical resistivity

## 22. SEAM CLAMP

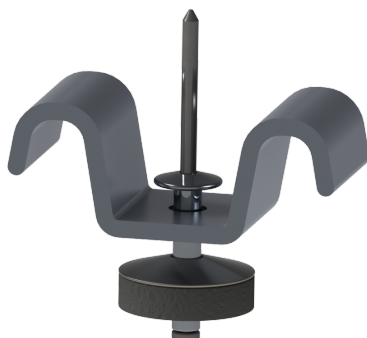


### Raw Material Used

Aluminium 6063 T6  
Size: 35mm

- Quick and Easy Installation
- High Strength
- Compatible with walkway.
- Long Life & Easy Maintenance
- Cost Effective

## 23. M CLIP FOR WALKWAY



### Raw Material Used

Aluminium 6063 T6  
Size: 25mm

- Quick and Easy Installation
- High Strength
- Compatible with 25mm walkway.
- Long Life & Easy Maintenance
- Cost Effective

## 24. FRP WALKWAY



### Raw Material Used

Fiberglass Reinforced Plastic  
Size: 14mm, 25mm.

- Quick and Easy Installation
- High Strength
- Cost Effective
- Long Life
- Well recognised



# Summary: Technical Specifications

Scope of Application	Industrial/ Metal/ Trapezoidal/ Standing Seam/ Asbestos Roof
Rail to Roof Fixation	Rivet/ Xylan SDS/ 150DN grade EPDM/ Adhesive
Rail to Panel Fixation	U-Clamp (Mid Clamp)/ Z-Clamp (End Clamp)
Module orientation	Portrait/ Landscape
Tilt Degree	Along the roof (Flush Mount)/ Inclined (5° to 20°)
Materials	AL 6063 T6/ SS 304/ 100% Genuine EPDM
Design Wind Speed	Up to 200 kmph*



## Connect With Us

### REGISTERED OFFICE

#### Sunmount® Solutions Pvt. Ltd.

1st Floor, SunTower, Rania Bazaar,  
Sirsa, Haryana - 125055

#### Contact us:



(+91) 8531 999 222  
7837 999 222



info@sunmount.in



www.sunmount.in

### WORKS

#### Sunmount® Solutions Pvt. Ltd.

Bajekan Road, Sirsa, Haryana - 125055



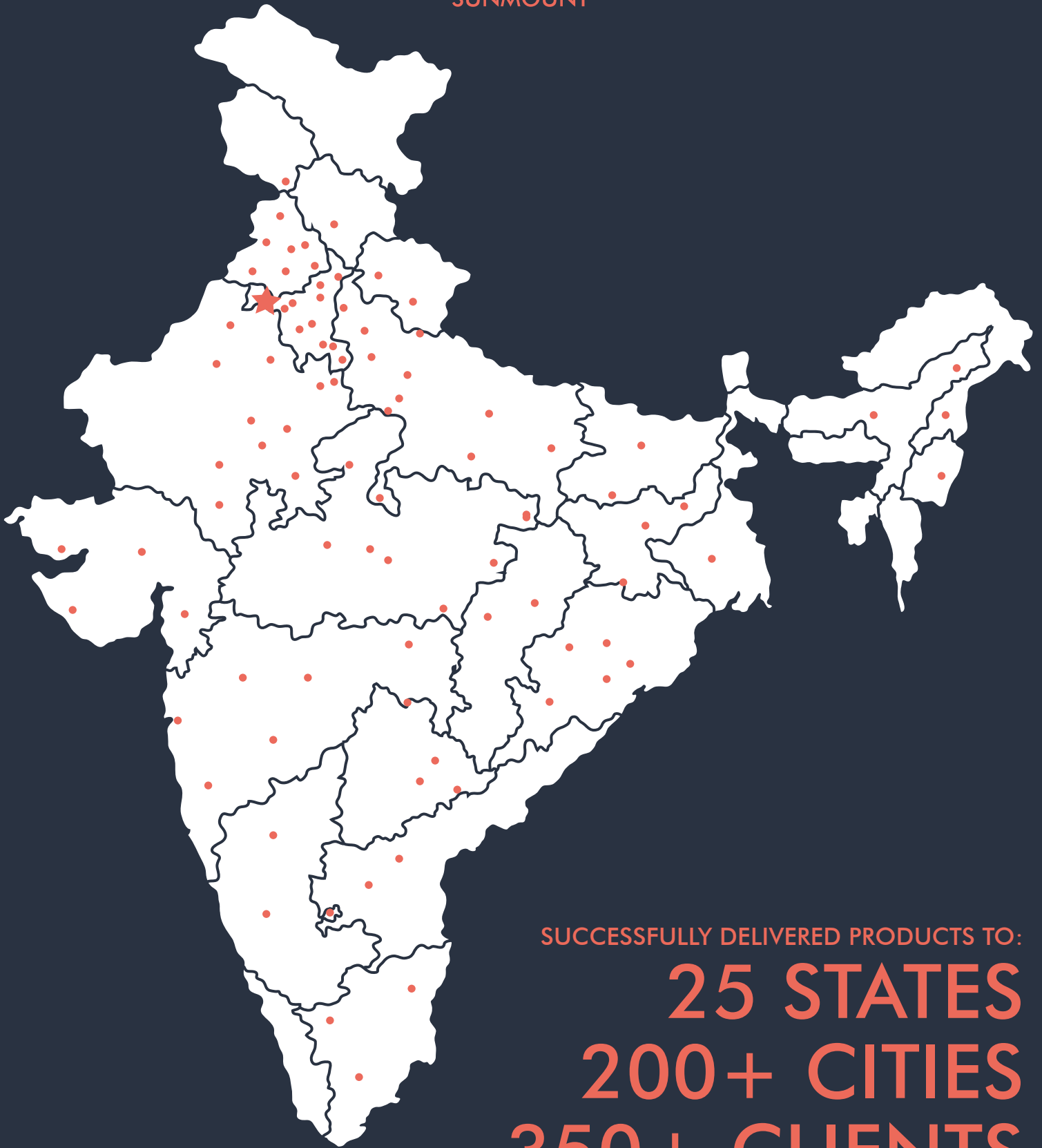
#### Find us on:







SUNMOUNT



SUCCESSFULLY DELIVERED PRODUCTS TO:

**25 STATES**

**200+ CITIES**

**350+ CLIENTS**

WITHIN 3 YEARS OF INCEPTION



SUNMOUNT SOLUTIONS PVT. LTD.  
(+91) 8531 999 222  
[info@sunmount.in](mailto:info@sunmount.in)  
[www.sunmount.in](http://www.sunmount.in)