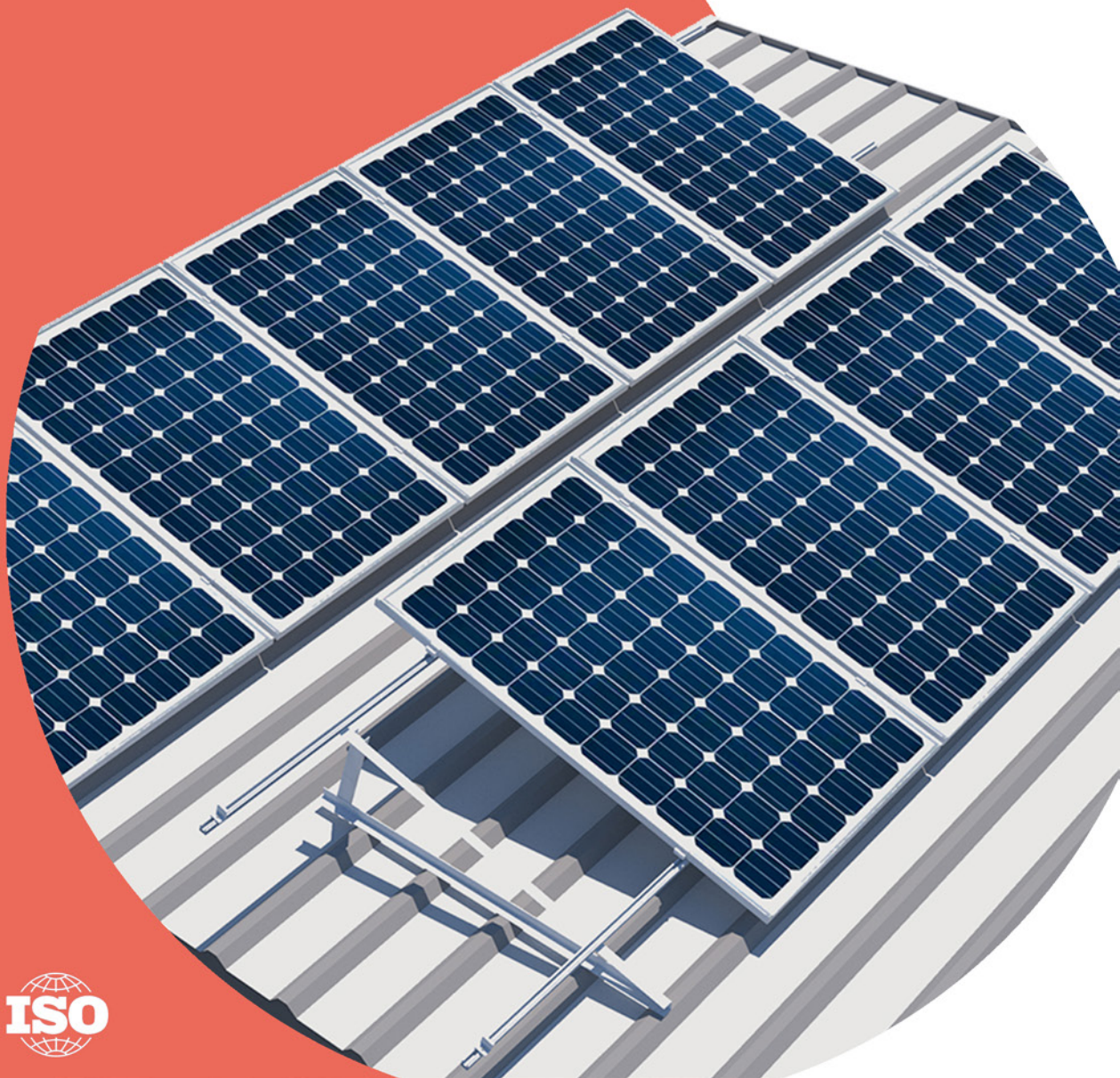


SUNMOUNT

SOLAR MOUNTING SOLUTIONS





ABOUT SUNMOUNT®

SunMount® is an indigenous Solar PV Modules Mounting company, specializing in the design, manufacture and supply of a diverse range of high quality and innovative rooftop solar mounting structural systems.

SunMount® provides end-to-end solutions for mounting solar PV modules on the rooftop. We provide solutions for various types of metal and asbestos roofs. We are committed to ensuring the highest quality of raw materials for all our products, top quality of finished product and on-time dispatch, backed with genuine warranty, swift and apt after-sales support.

Our mission is to promote renewable energy solutions by making solar installations easier and accessible to all and thereby eliminating the need for conventional energy resources like fossil fuels.

THE TEAM

SunMount® is an industrious & studious team of prolific & vastly experienced professionals; Engineers, Chartered Engineers, Architects and Post Graduates in Commerce & Marketing. We have a combined team experience of more than 75 years, in diversified sectors of Manufacturing, Services and Consultancy.

SunMount® aspires and aims to bridge the gap between the clients' dynamic needs and innovative solutions - with genuine & reliable scientific analysis and certifications from reputed organisations, along with being competitive in prices.

'Quality with Stability till Infinity'

Reports and Certifications



TUV Certified

Component Analysis:

1. FEA analysis of all Structural Members.
2. FEA analysis of all Rails & Brackets.
3. FEA analysis of all Fasteners & Accessories.

Wind Analysis Report:

1. End and Mid Clamp Assembly – With different variations
2. Power Clamp Assembly – With different variations

SUNMOUNT® OFFERS



Most Optimum &
Cost Effective
Solutions



Best in Market
Warranty



Quick Dispatch and
Neat Installations



Design Wind Speed
up to 200 kmph*



High Strength Products
with Long Life and Easy
Maintenance



Prompt and Apt
After-Sales Support

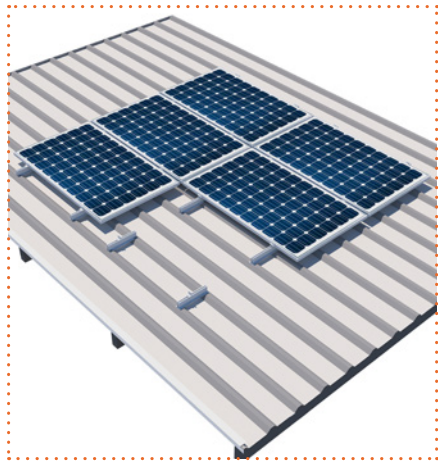
OUR PRODUCTS

SunMount® provides the following fixation systems for mounting solar PV modules on industrial metal and asbestos roof.

Solutions and Products are available in both penetrating/non-penetrating options.

1. Mono Rail System

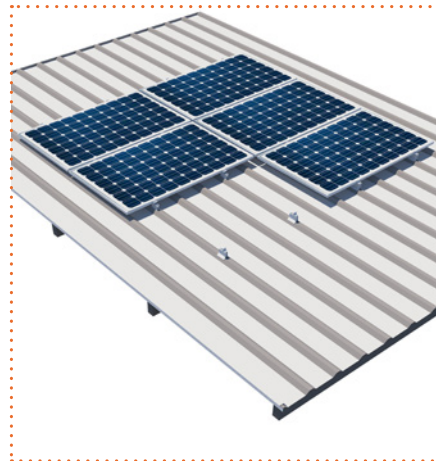
Portrait Orientation



p.08

2. Mini Rail System

Landscape Orientation



p.10

3. Long Rail System

Portrait Orientation



p.12

4. Long Rail System

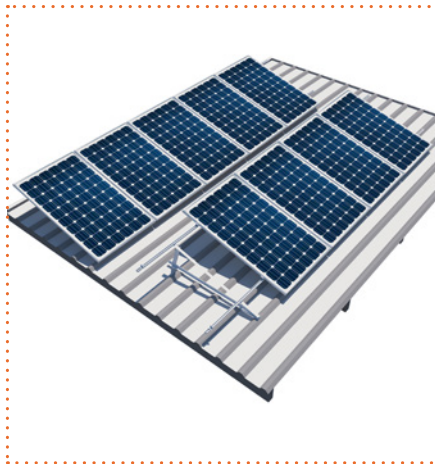
Landscape Orientation



p.14

5. Inclined System

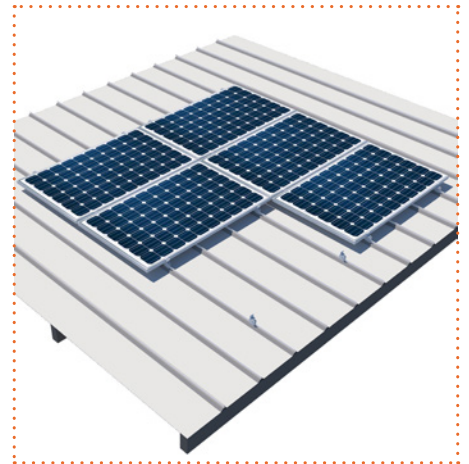
Portrait Orientation



p.16

6. Standing Seam System

Landscape Orientation

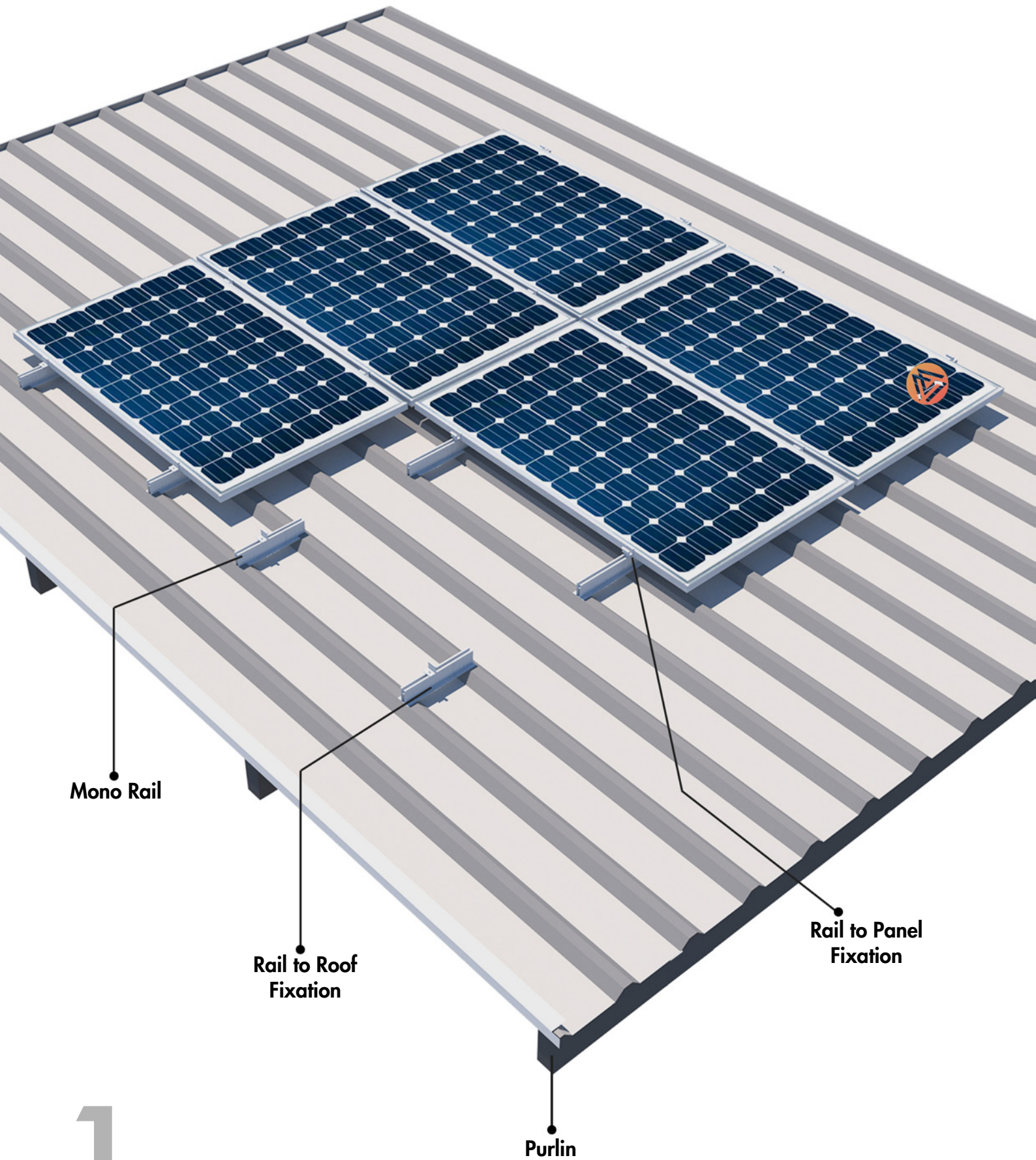


p.18

SunMount® manufactures all the fixing and fastening accessories in-house or source from genuine & reliable vendors after strict quality checks and incisive scrutiny.

MONO RAIL SYSTEM:

PORTRAIT ORIENTATION



1.

SYSTEM HIGHLIGHTS

Mono Rail System is a lightweight and most optimum system for mounting solar PV panels on trapezoidal metal roof.

Its easy installation allows to install high capacity of solar panels in reasonably short amount of time.

The system is suitable for a large scale of applications.

Properties

- Lightweight & Optimised system
- Easy Installation & Maintenance
- PV Modules are installed in **Portrait** orientation.
- Suitable for any trapezoidal sheet crest width.
- Compatible with all PV module.
- Cost Effective Solution
- Roof clearance of 100mm.
- Design Wind Speed - Upto 200 kmph*
- Available in Anodized/Non-Anodized finish.



Mono Rail Dimensions:

Height: 70 mm

Length: Customised as per Crest to Crest Distance

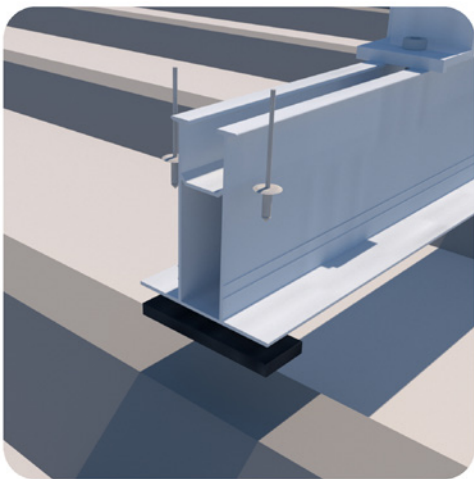
Raw Material Used:

Aluminium 6063 T6 | SS 304 | EPDM

MONO RAIL FIXATIONS

Rail to Roof

Rail to Roof fixation is provided by Rivet and EPDM tape. Suitable with any trapezoidal sheet crest width. Non-penetrative fixation can also be provided using structural adhesive.



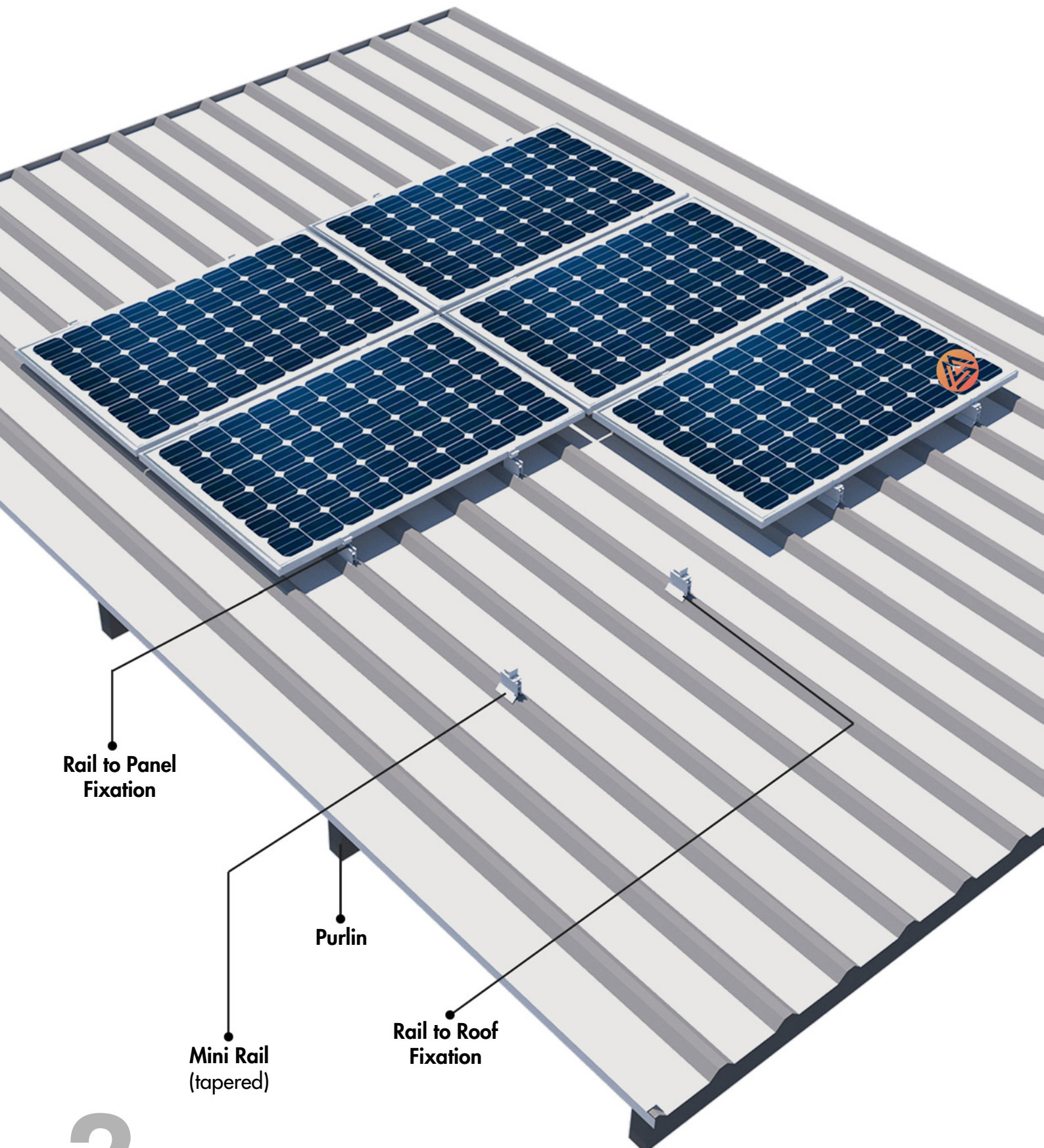
Rail to Panel

Rail to Panel fixation is provided by U-clamp or Mid-clamp. Suitable for 30mm, 35mm and 40mm thickness of solar panel.



MINI RAIL SYSTEM:

LANDSCAPE ORIENTATION



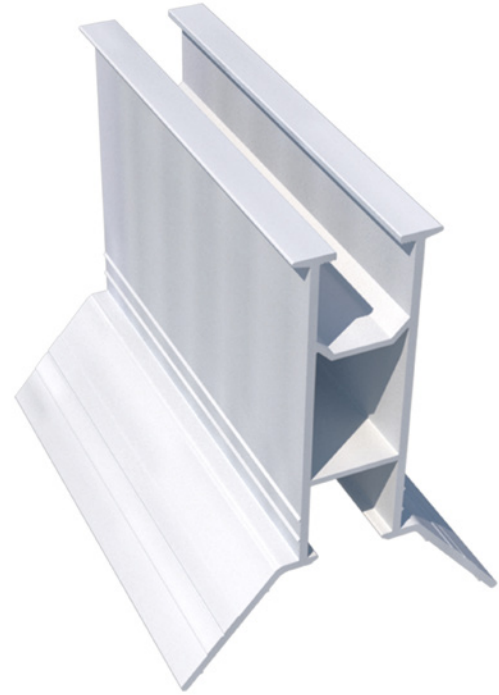
2.

SYSTEM HIGHLIGHTS

Mini Rail System is a lightweight and most optimum system for mounting solar PV panels on trapezoidal metal roof.

Its easy installation allows to install high capacity of solar panels in reasonably short amount of time.

The system is suitable for a large scale of applications.



Properties

- Lightweight & Optimised system
- Easy Installation & Maintenance
- PV Modules installed in **Landscape** orientation.
- Compatible with all PV module.
- Roof clearance of 100mm.
- Cost Effective Solution
- Design Wind Speed - Upto 200 kmph*
- Available in Anodized/Non-Anodized finish.

Mini Rail Dimensions:

Height: 70 mm

Length: 100 mm | Customizable

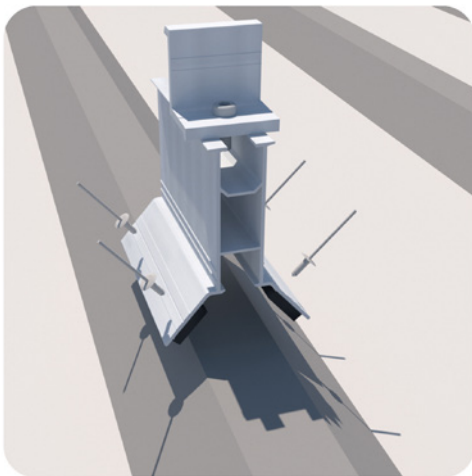
Raw Material Used:

Aluminium 6063 T6 | SS 304 | EPDM

MINI RAIL FIXATIONS

Rail to Roof

Rail to Roof fixation is provided by Rivet and EPDM tape. Non-penetrative fixation can also be provided using structural adhesive.



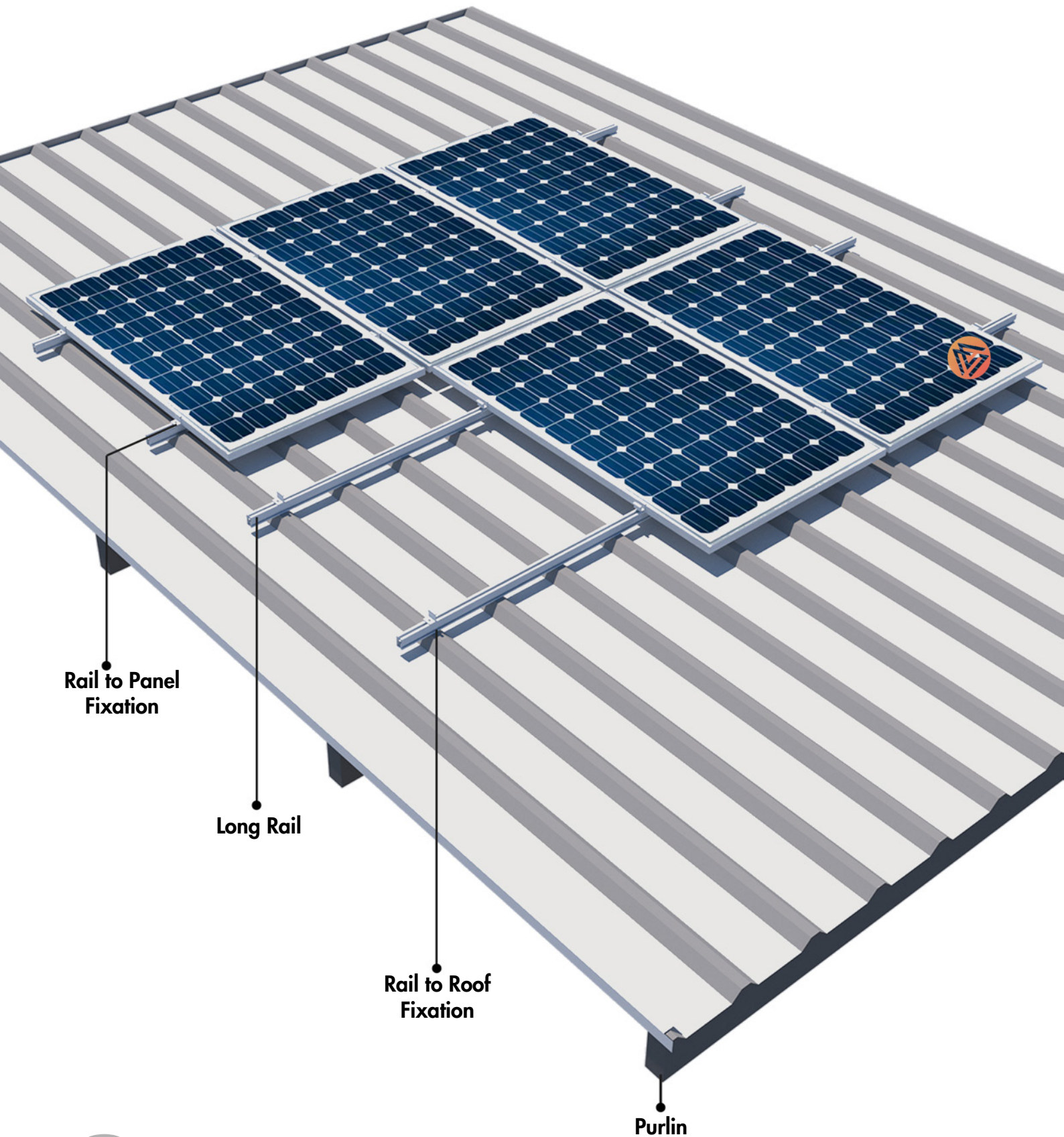
Rail to Panel

Rail to Panel fixation is provided by Z-clamp or End-clamp. Suitable for 30mm, 35mm and 40mm thickness of solar panel.



LONG RAIL SYSTEM:

PORTRAIT ORIENTATION



3.

SYSTEM HIGHLIGHTS

Long Rail System is a high-strength system for mounting solar PV panels on trapezoidal metal or asbestos roofs.

Its easy installation allows to install high capacity of solar panels in reasonably short amount of time.

The system requires lesser number of punctures in the roof as compared to Mini rail and Mono rail systems.

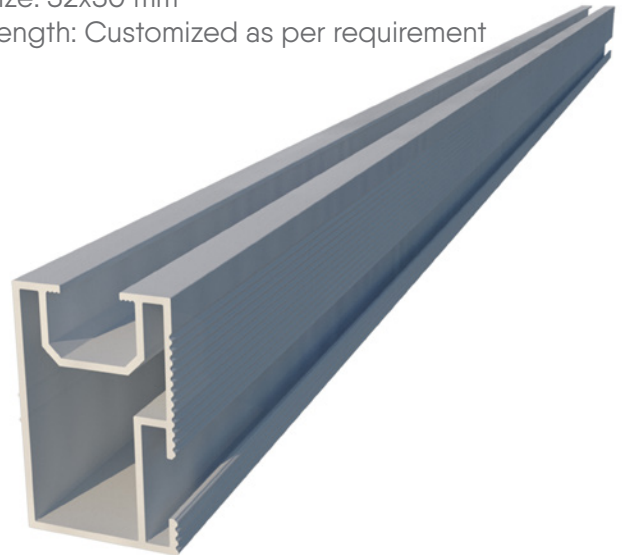
Properties

- Easy Installation & Maintenance
- PV Modules are installed in **Portrait** orientation.
- Purlin mounted robust system for high wind loads.
- Universal rails suitable for any roof crest.
- Utilizes the existing holes of self-drilling screws on the roof.
- Suitable for asbestos sheet roof by fixing on existing J-bolts.
- Available in Anodized/Non-Anodized finish.
- Design Wind Speed - Upto 200 kmph*
- **Raw Material Used:** Aluminium 6063 T6 | SS 304 | EPDM

Long Rail - PRO:

Size: 32x50 mm

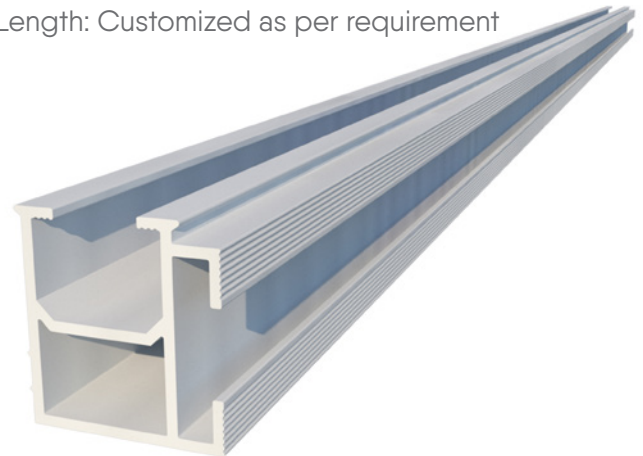
Length: Customized as per requirement



Long Rail - LITE:

Size: 30x28 mm

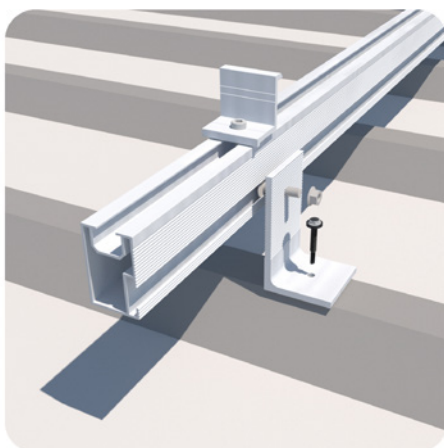
Length: Customized as per requirement



LONG RAIL FIXATIONS

Rail to Roof

Rail to Roof fixation is provided by L-clamp which is fixed to the crest/purlin with self-drilling screw.



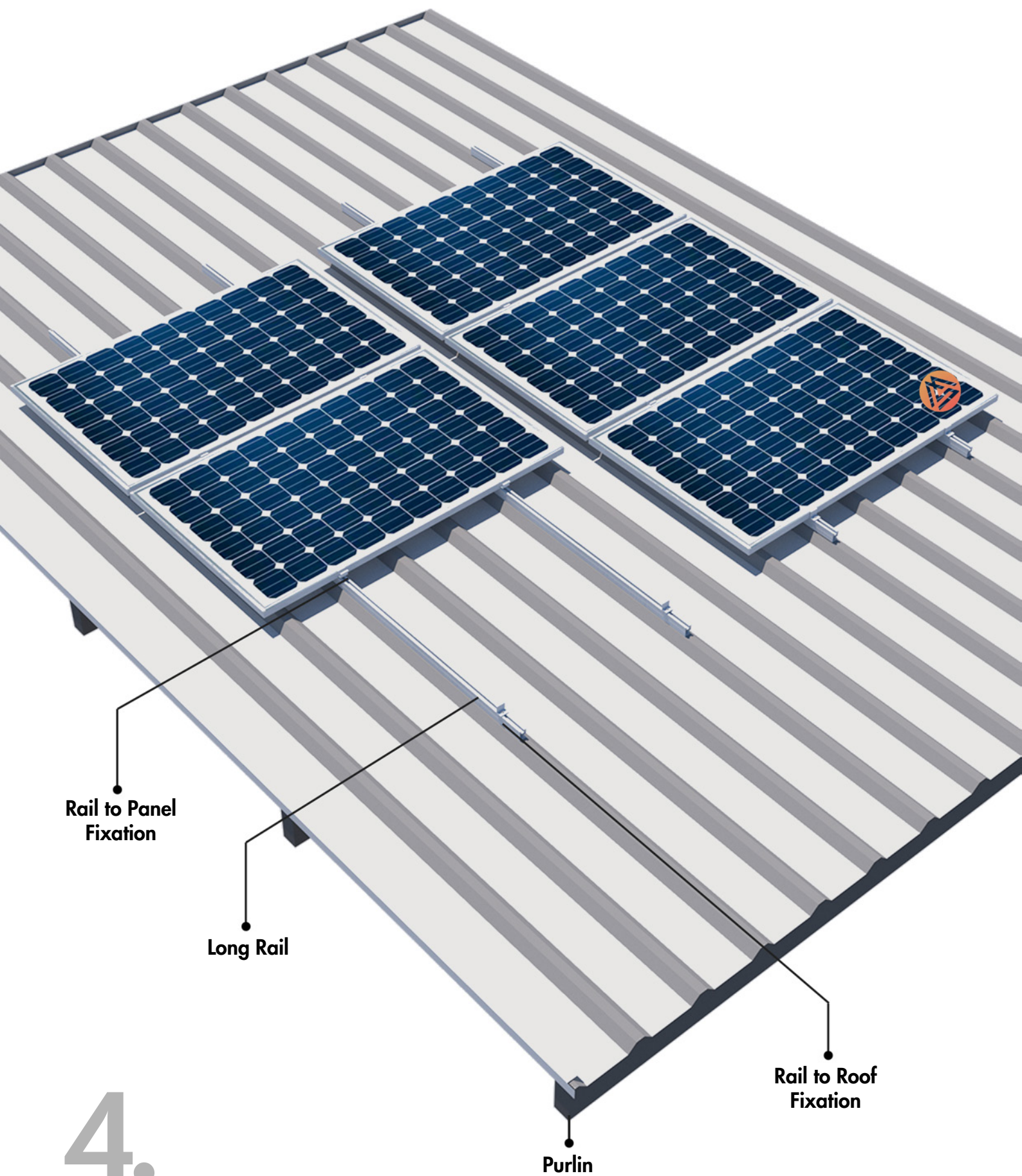
Rail to Panel

Rail to Panel fixation is provided by U-clamp or Mid-clamp. Suitable for 30mm, 35mm and 40mm thickness of solar panel.



LONG RAIL SYSTEM:

LANDSCAPE ORIENTATION



4.

SYSTEM HIGHLIGHTS

Long Rail System is a high-strength system for mounting solar PV panels on trapezoidal metal or asbestos roofs.

Its easy installation allows to install high capacity of solar panels in reasonably short amount of time.

The system requires lesser number of punctures in the roof as compared to Mini rail and Mono rail systems.

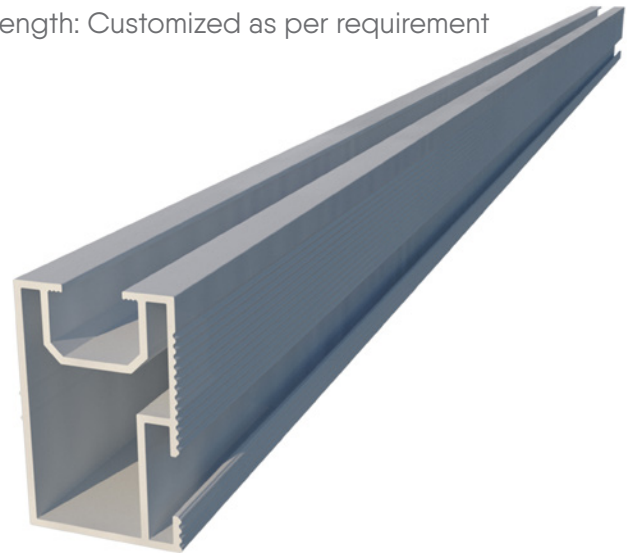
Properties

- Easy Installation & Maintenance
- PV Modules installed in **Landscape** orientation.
- Purlin mounted robust system for high wind loads.
- Universal rails suitable for any roof crest.
- Utilizes the existing holes of self-drilling screws on the roof.
- Suitable for asbestos sheet roof by fixing on existing J-bolts.
- Available in Anodized/Non-Anodized finish.
- Design Wind Speed - Upto 200 kmph*
- **Raw Material Used:** Aluminium 6063 T6 | SS 304 | EPDM

Long Rail - PRO:

Size: 32x50 mm

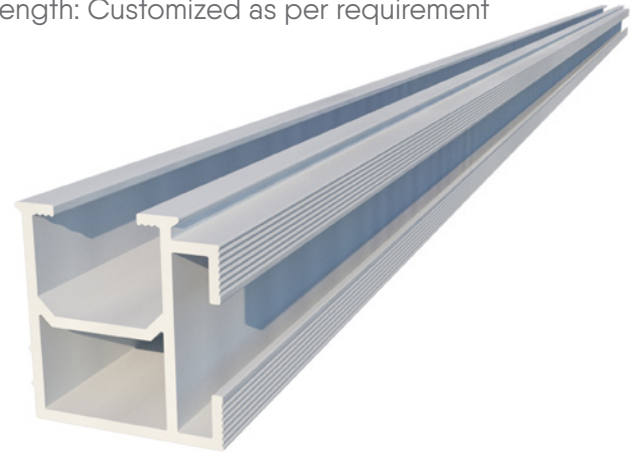
Length: Customized as per requirement



Long Rail - LITE:

Size: 30x28 mm

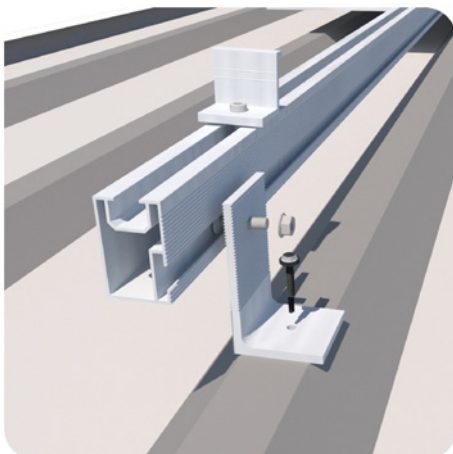
Length: Customized as per requirement



LONG RAIL FIXATIONS

Rail to Roof

Rail to Roof fixation is provided by L-clamp which is fixed to the crest/purlin with self-drilling screw.

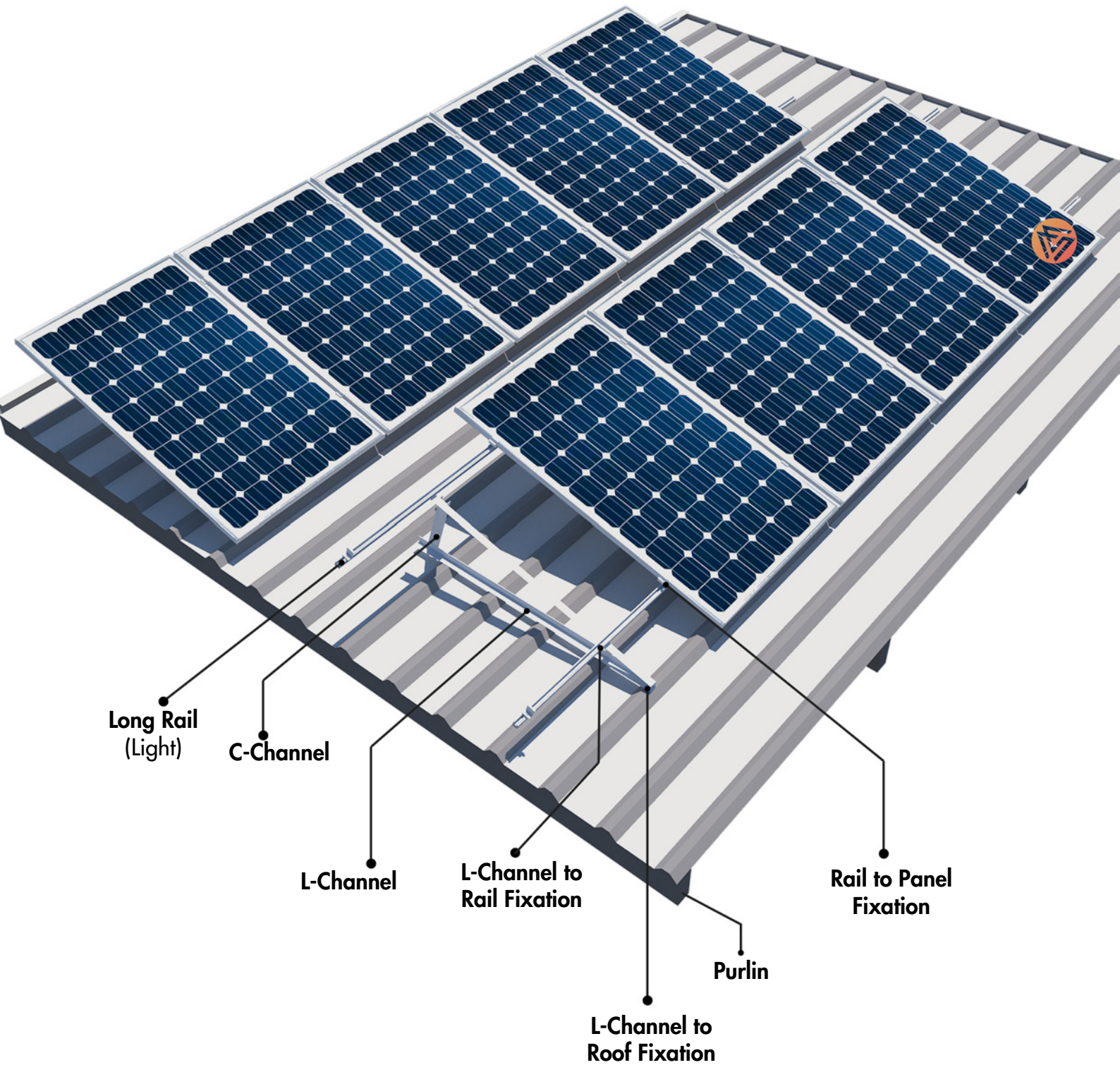


Rail to Panel

Rail to Panel fixation is provided by Z-clamp or End-clamp. Suitable for 30mm, 35mm and 40mm thickness of solar panel.



INCLINED SYSTEM



5.

SYSTEM HIGHLIGHTS

An Inclined system is used for mounting solar panels on trapezoidal **metal or asbestos** roofs with specially inclined solar mounting structures which can result in the higher generation of electricity from the PV system.

This system allows installing modules in a south-facing direction on roofs that are tilted towards North, East and West.

The Inclination angle can vary as per requirement from 5° to 20° tilt.

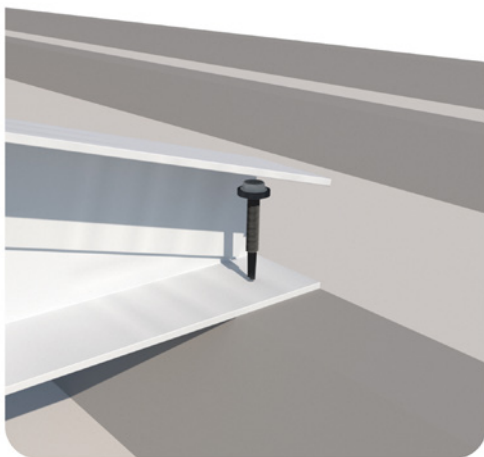
Properties

- Easy Installation & Maintenance
- PV Modules are installed in **Portrait** orientation.
- Increased height for thermal stability of system.
- Utilizes the existing holes of self-drilling screws on the roof and on purlins.
- Universal rail suitable for any roof crest.
- Compatible with all PV module.
- High roof clearance
- Available in Anodized/Non-Anodized finish.
- Design Wind Speed - Upto 170 kmph*

CHANNEL FIXATIONS

Channel to Roof

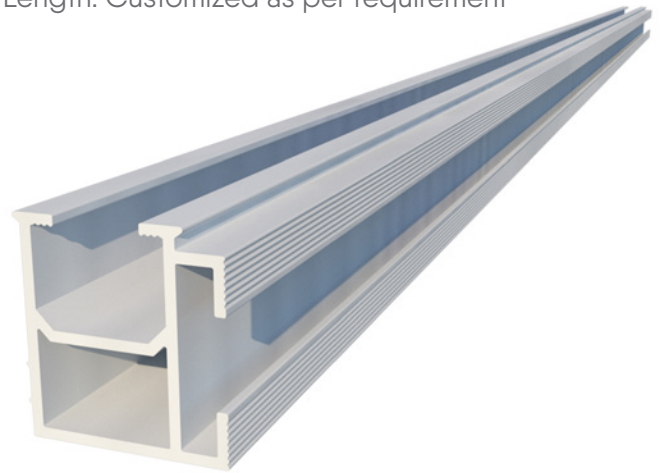
L-channel is fixed to the crest/purlin with self-drilling screw.



Long Rail - LITE:

Size: 30x28 mm

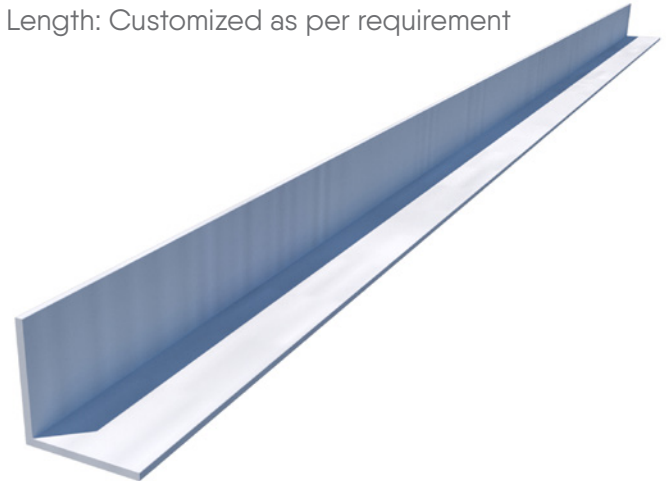
Length: Customized as per requirement



L-Channel:

Size: 38x38 mm

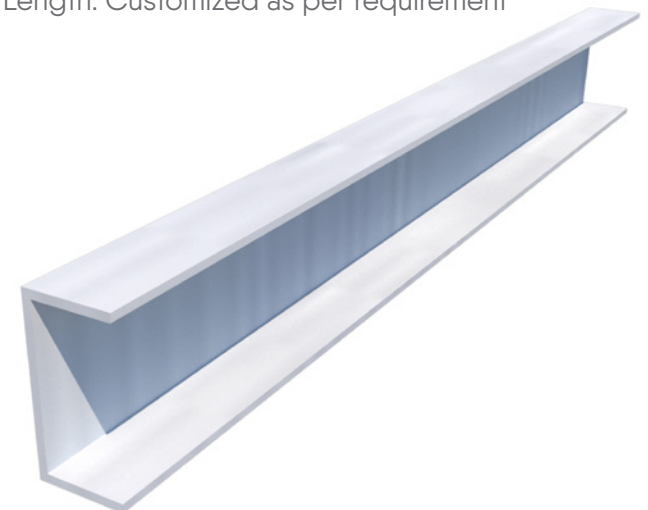
Length: Customized as per requirement



C-Channel:

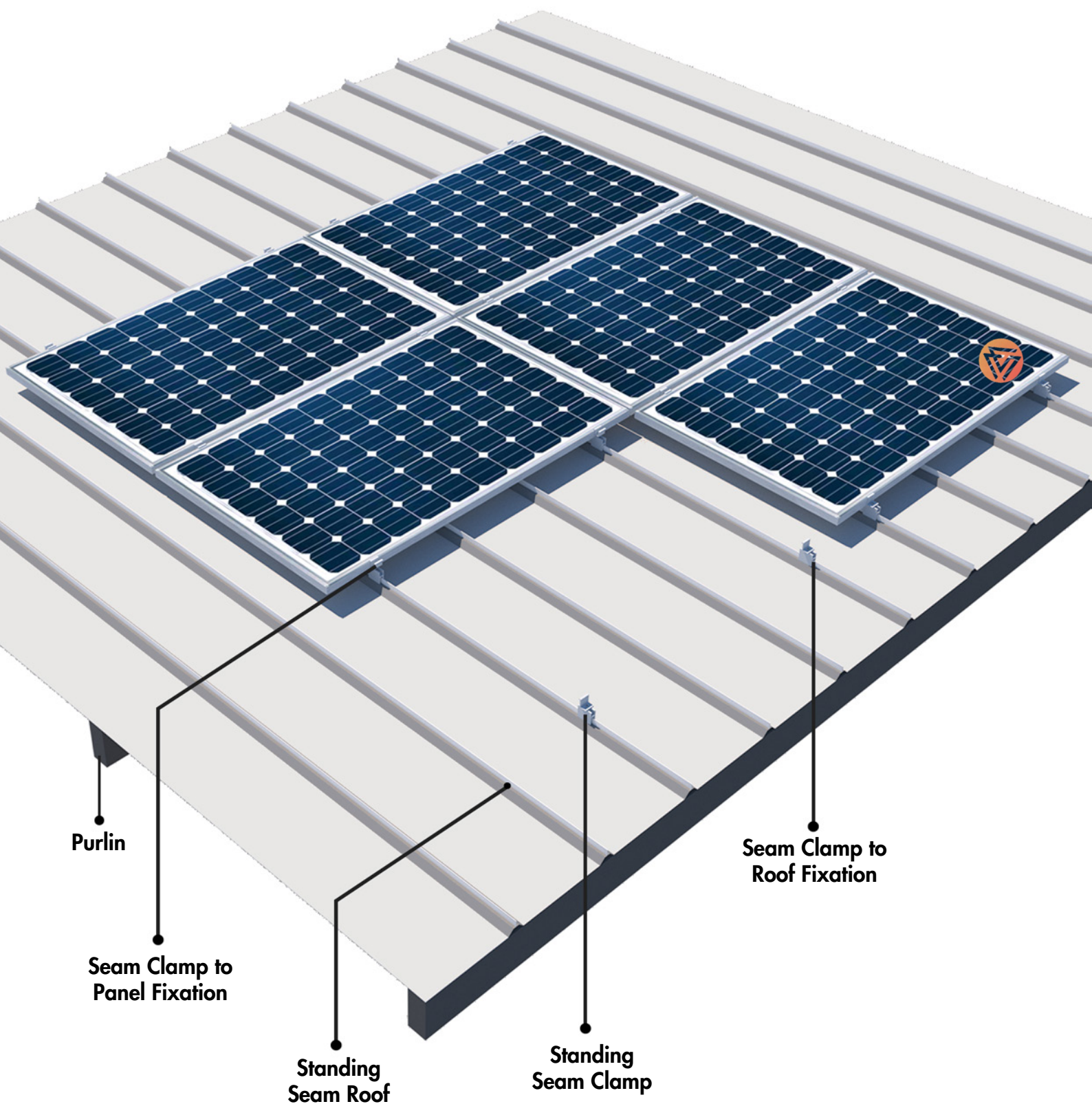
Size: 25x50 mm

Length: Customized as per requirement



Raw Material Used: Aluminium 6063 T6 | SS 304 | EPDM

STANDING SEAM SYSTEM



6.

SYSTEM HIGHLIGHTS

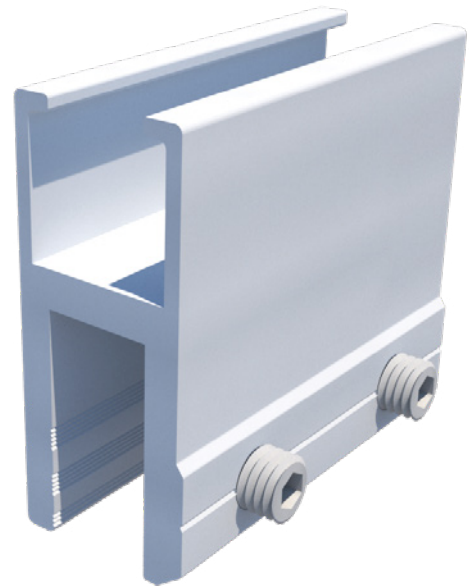
Standing Seam System is a lightweight and optimum system for mounting solar PV panels on standing seam roof.

Its easy installation allows to install high capacity of solar panels in reasonably short amount of time.

The system is suitable for a large scale of applications.

Properties

- Lightweight & Optimised system
- Easy Installation & Maintenance
- PV Modules installed in **Landscape** orientation.
- Suitable for standing seam roof profile.
- Compatible with all PV module.
- Cost Effective Solution
- Design Wind Speed - Upto 200 kmph*
- Available in Anodized/Non-Anodized finish.



Seam Clamp Dimensions:

Height: 55 mm

Length: 60 mm | 100mm | Customizable

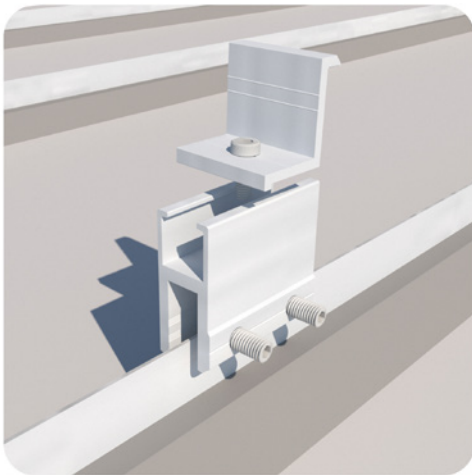
Raw Material Used:

Aluminium 6063 T6 | SS 304 | EPDM

SEAM CLAMP FIXATIONS

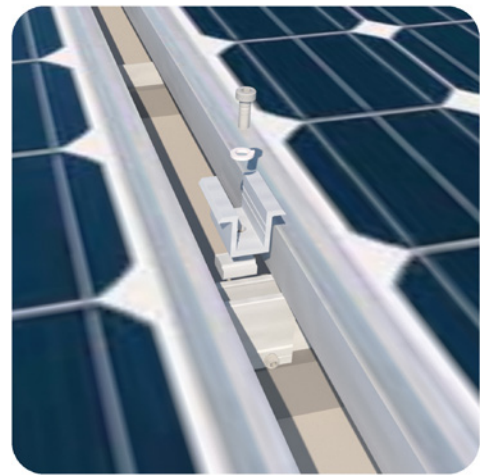
Seam Clamp to Roof

Seam Clamp is fixed to the standing seam profile of the roof with grub screws.



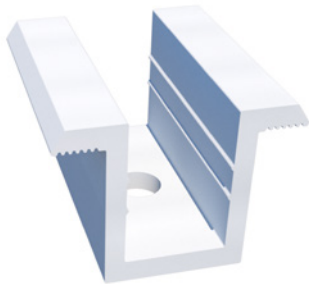
Seam Clamp to Panel

Seam Clamp to Panel fixation is provided by U-clamp or Mid-clamp. Suitable for 30mm, 35mm and 40mm thickness of solar panel.



ACCESSORIES

1. U-CLAMP



Raw Material Used
Aluminium 6063 T6

- Quick and Easy Installation
- High Strength
- Compatible with all PV Module
- Long Life & Easy Maintenance
- Cost Effective

2. Z-CLAMP



Raw Material Used
Aluminium 6063 T6

- Quick and Easy Installation
- High Strength
- Compatible with 30mm, 35mm, 40mm PV Modules
- Long Life & Easy Maintenance

3. L-CLAMP



Raw Material Used
Aluminium 6063 T6

- Quick and Easy Installation
- High Strength
- Compatible with all PV Module
- Long Life & Easy Maintenance
- Cost Effective

4. ALLEN KEY BOLT



Raw Material Used
SS 304

- Quick and Easy Installation
- High Strength
- Long Life
- Easy Maintenance

5. T-BOLT



Raw Material Used
SS 304

- Quick and Easy Installation
- High Strength
- Long Life
- Easy Maintenance

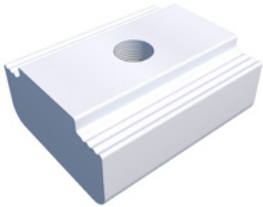
6. HEX BOLT



Raw Material Used
SS 304

- Quick and Easy Installation
- High Strength
- Long Life
- Easy Maintenance

7. RAIL NUT



Raw Material Used
Aluminium 6063 T6

- Quick and Easy Installation
- High Strength
- Long Life & Easy Maintenance
- Compatible with all types of Rail.

8. FLANGE NUT



Raw Material Used
SS 304

- Quick and Easy Installation
- High Strength
- Long Life
- Easy Maintenance
- Easy Removal

9. SPRING WASHER



Raw Material Used
SS 304

- Quick and Easy Installation
- Provides strength to the bolted joints.
- Prevents loosening of nuts.
- Long Life & Easy Maintenance

10. SELF DRILLING SCREW



Raw Material Used
Xylan Coated

- Quick and Easy Installation
- High Strength
- Cost Effective
- One Tool Approach
- Long Life & Easy Maintenance

11. RIVET



Raw Material Used
Aluminium

- Quick and Easy Installation
- High Strength
- Cost Effective
- Long Life
- Well recognised

12. EPDM TAPE



Raw Material Used
100% Genuine EPDM Rubber

- 150DN/ASTM Methods Tested
- High Strength & Long life
- Moisture and Heat Resistant
- Versatile & Cost Effective
- Good electrical resistivity

Summary: Technical Specifications

Scope of Application	Industrial/ Metal/ Trapezoidal/ Standing Seam/ Asbestos Roof
Rail to Roof Fixation	Rivet/ Xylan SDS/ 150DN grade EPDM/ Adhesive
Rail to Panel Fixation	U-Clamp (Mid Clamp)/ Z-Clamp (End Clamp)
Roof Slope	3° to 25°
Min. Sheet Thickness	0.4 mm Steel and ≥ 0.5 mm Aluminium
Crest to Crest Distance	200 mm to 400 mm (Customizable)
Crest Width	Min. 22 mm
Building Height	Upto 20 m
Structure Type	Penetrating/Non-Penetrating
Module orientation	Portrait/ Landscape
Tilt Degree	Along the roof (Flush Mount)/ Inclined (5° to 20°)
Size of Module Array	Any size possible
Materials	AL 6063 T6/ SS 304/ 100% Genuine EPDM
Design Wind Speed	Up to 200 kmph*

Connect With Us

REGISTERED OFFICE

SunMount® Solutions

1st Floor, SunTower, Rania Bazaar,
Sirsa, Haryana - 125055.

CORPORATE OFFICE

SunMount® Solutions

Street No.11, Preet Nagar, Begu Road,
Sirsa, Haryana - 125055.

Contact us:



(+91) 7837-999-222
7581-999-222



info@sunmount.in



www.sunmount.in

Find us on:







SUNMOUNT® SOLUTIONS

(+91) 7837-999-222

info@sunmount.in

www.sunmount.in